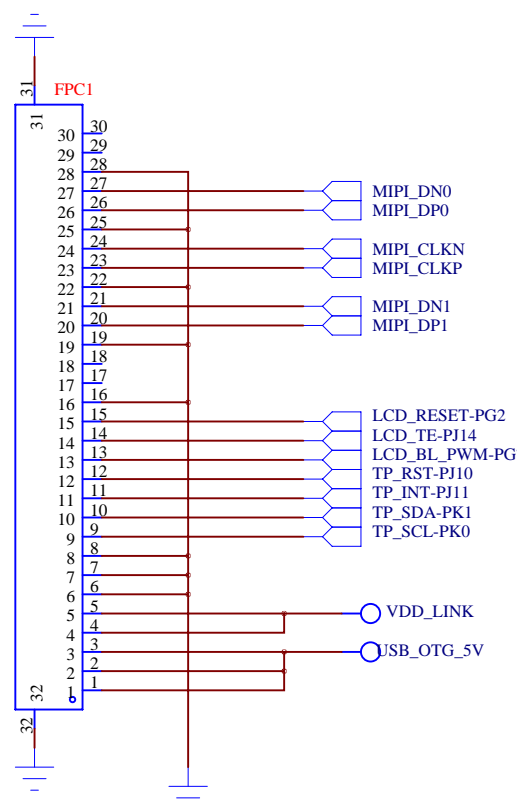
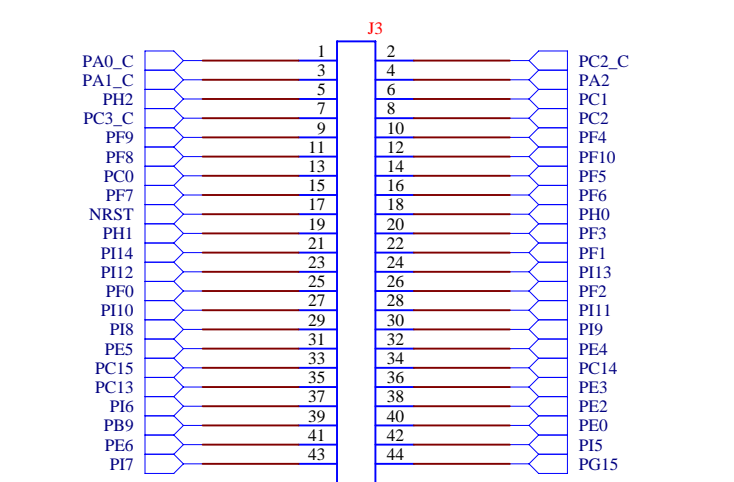
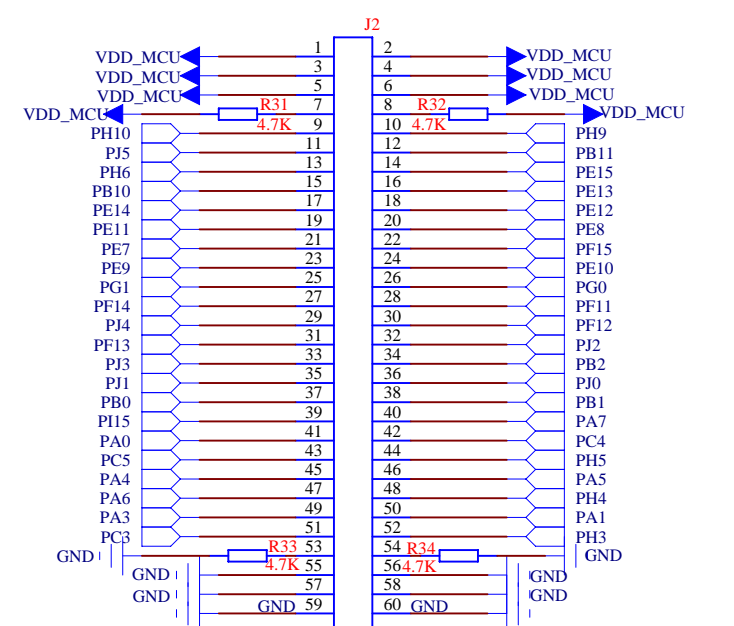
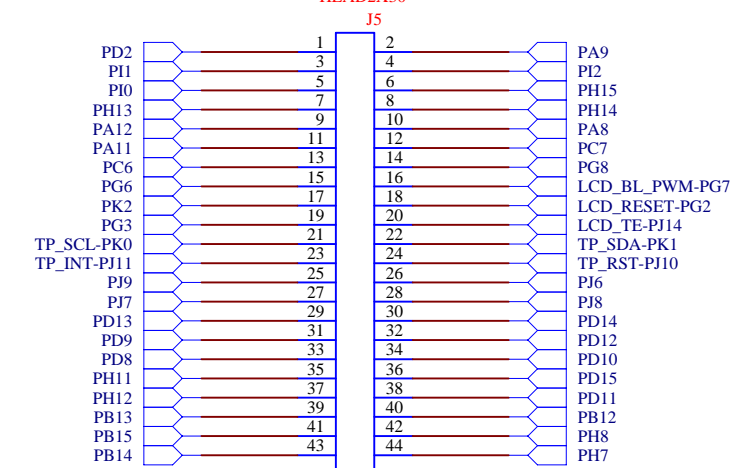
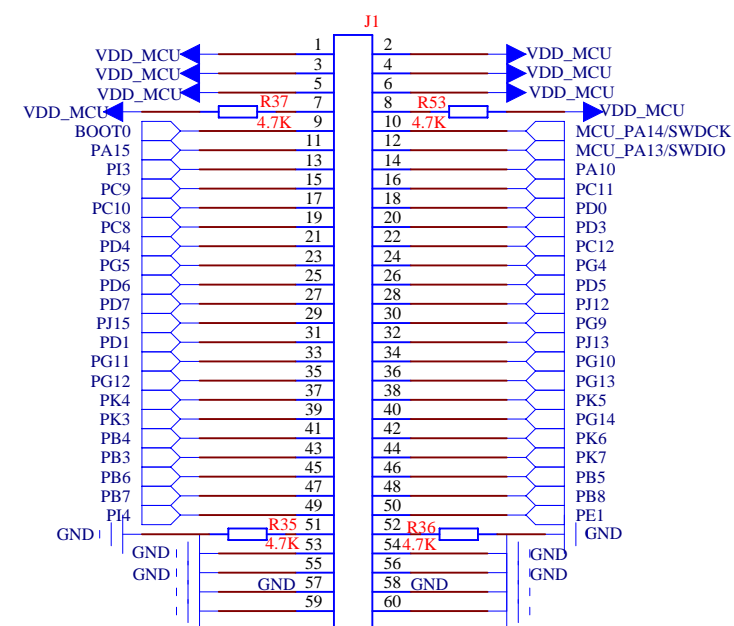
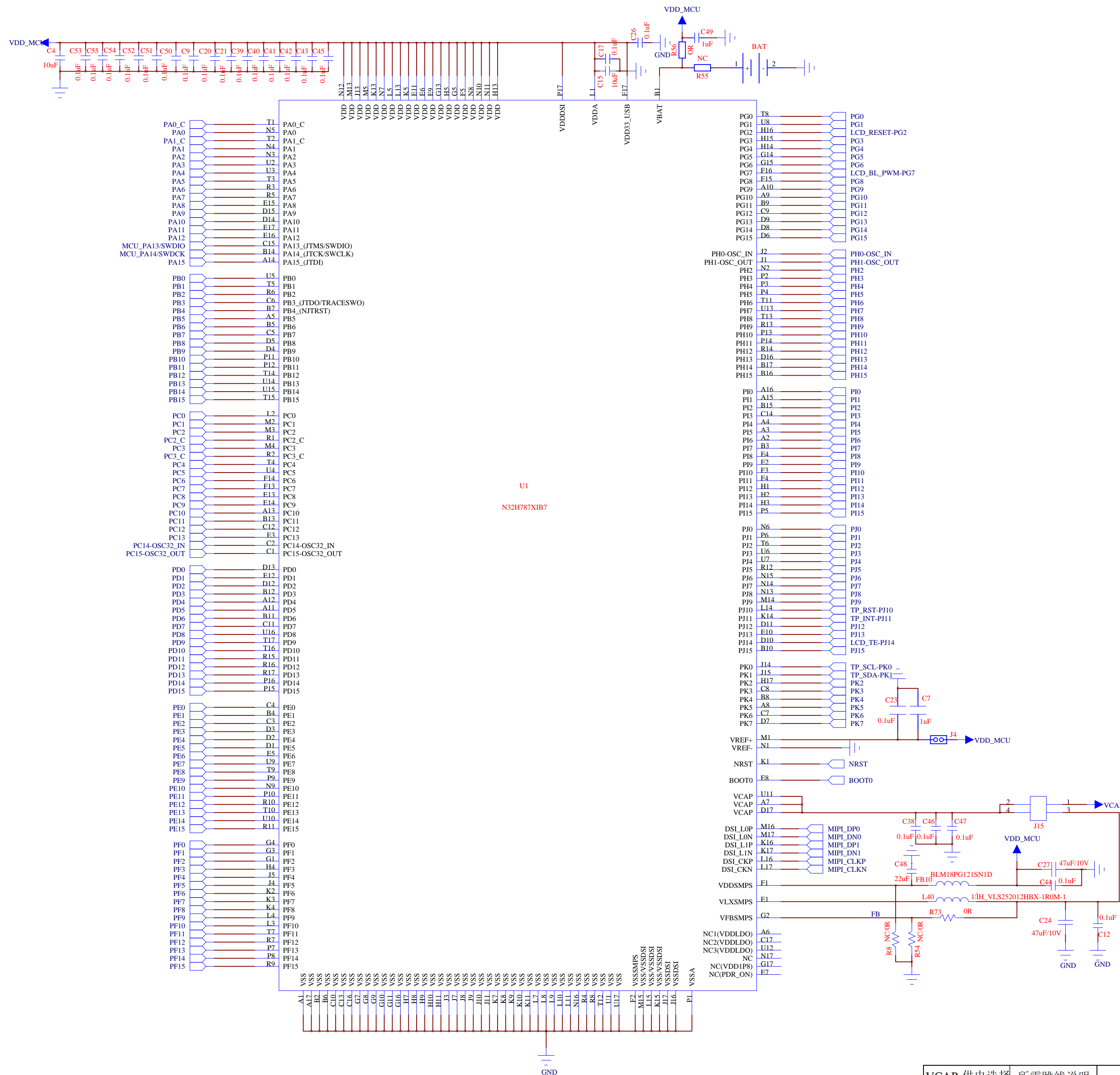


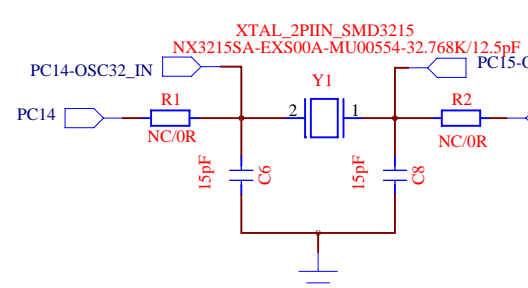
REVISION RECORD			
LTR	ECO NO.	APPROVED:	DATE:

MCU

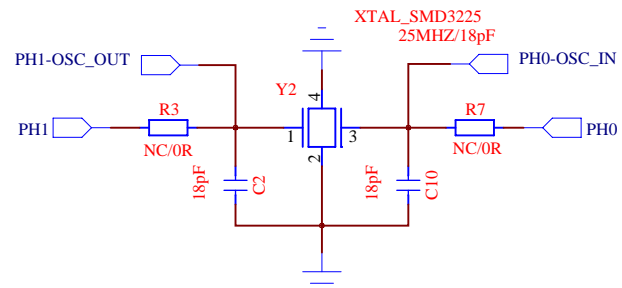


VCAP 供电选择	所需跳线说明	贴片器件说明
内部DCDC供电	J15插针3和4引脚需连接	需贴片器件: FB10、L40、R73、C12、C24、C27、C44、C48、C38、C46、C47 不需贴片器件: R8、R54
外部LDO供电	J15插针1和2引脚需连接	需贴片器件: R8、R54、C38、C46、C47 不需贴片器件: FB10、L40、R73、C12、C24、C27、C44、C48

32.768K Crystal



25M Crystal



COMPANY: NationS			
TITLE: N32H787XIB7_STB			
CODE:	SIZE: A1	DRAWING NO: 1	REV: 1.5
SCALE:	SHEET: 2 OF 2		

DRAWN:	DATED:
CHECKED:	DATED:
QUALITY CONTROL:	DATED:
RELEASED:	DATED: