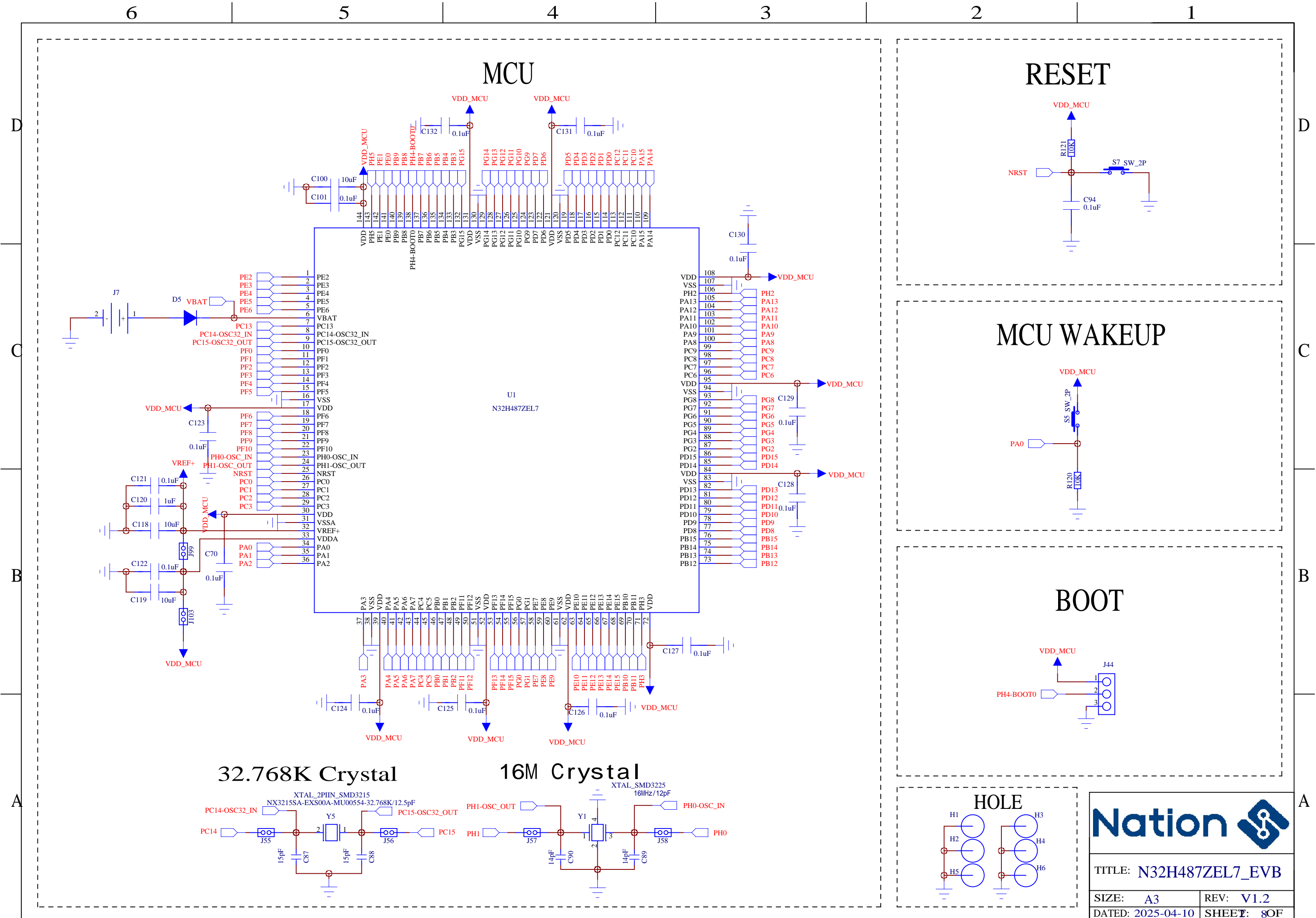


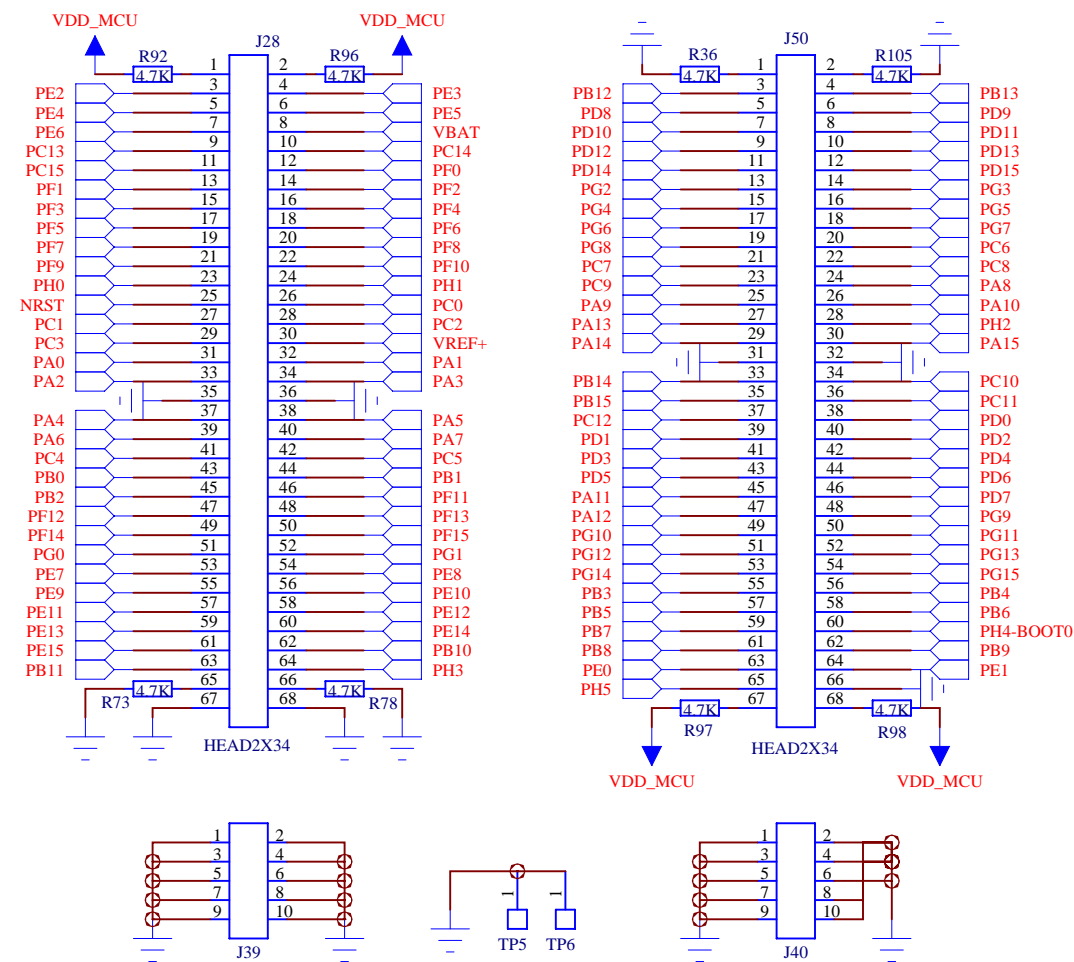
TITLE: N32H487ZEL7_EVB

SIZE: A3 REV: V1.2

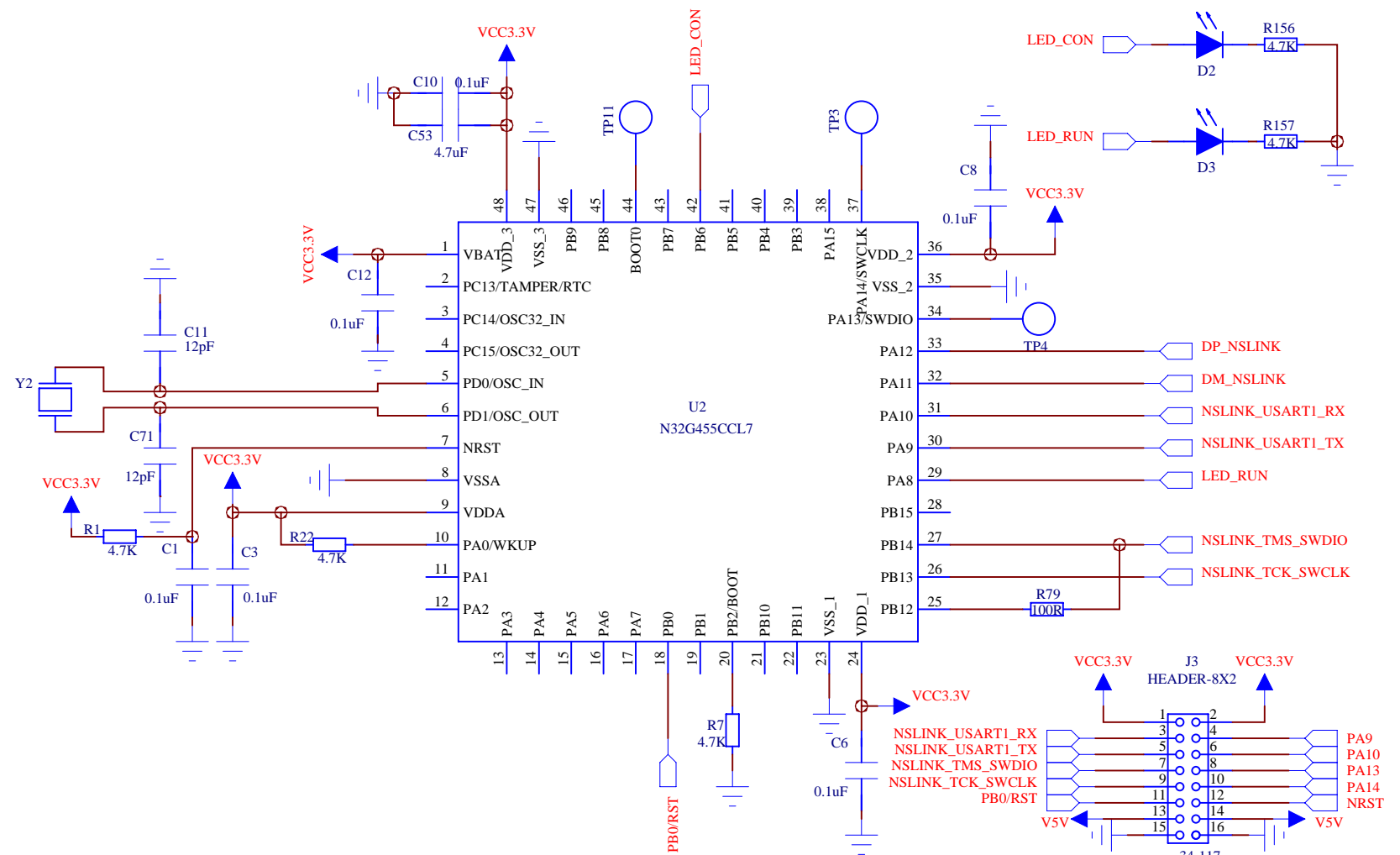
DATED: 2025-04-10 SHEET: 80F



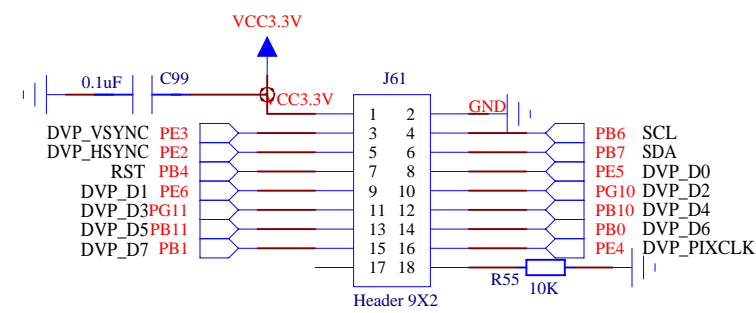
IO Interface



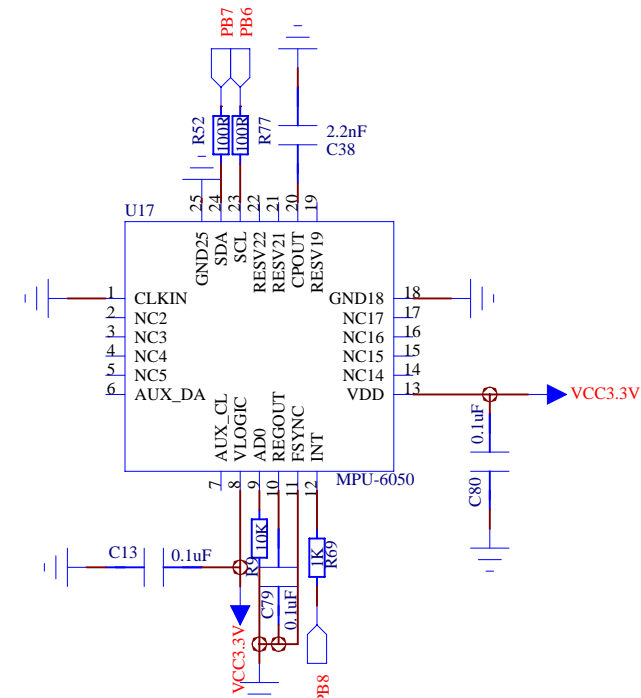
NSLINK



DVP



Six-axis sensor



TITLE: N32H487ZEL7_EVB

SIZE: A3 REV: V1.2

DATED: 2025-04-10 SHEET: 8 OF

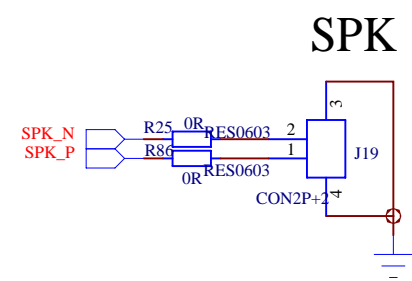
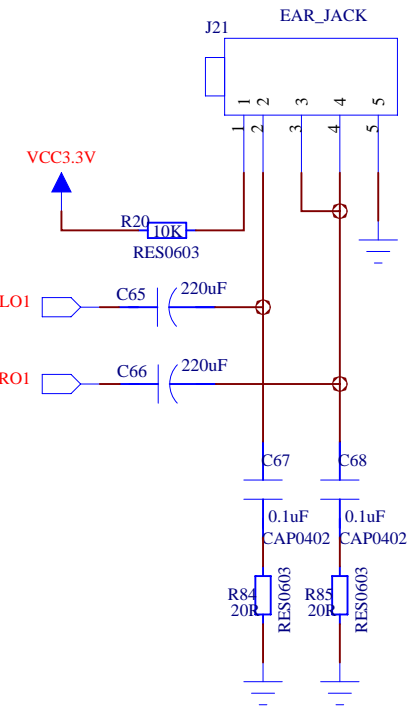
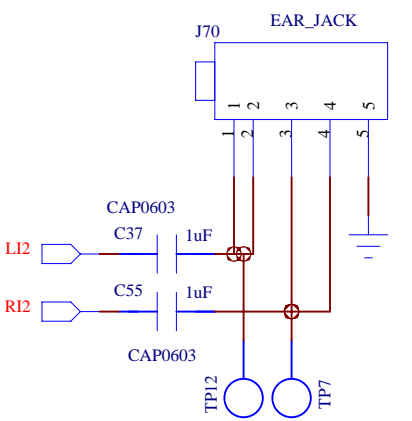
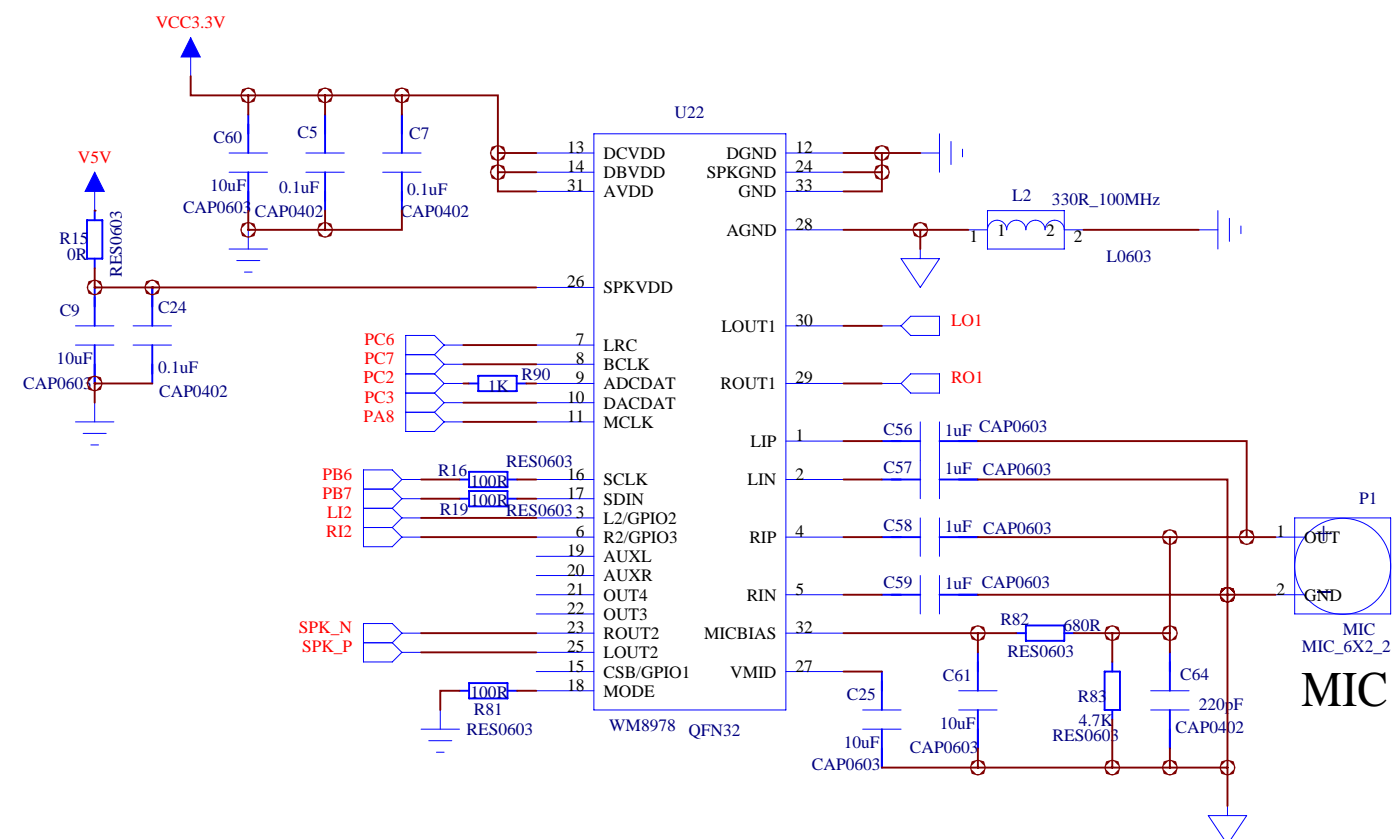
D

D

AUDIO CODE

AUDIO INPUT

AUDIO OUTPUT



C

C

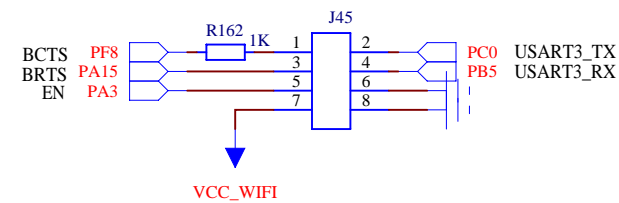
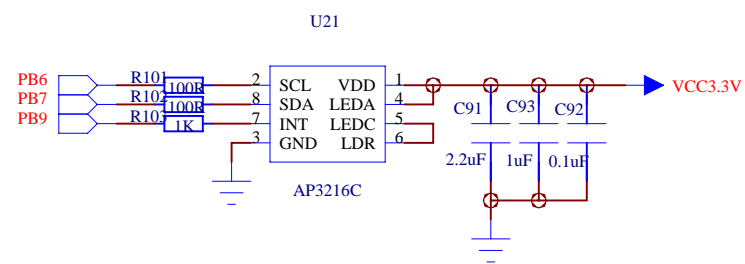
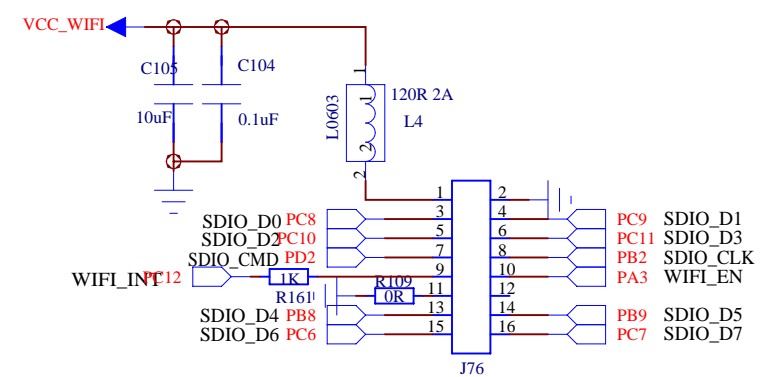
B

B

SDIO_WIFI

ALS/PS/IRLED

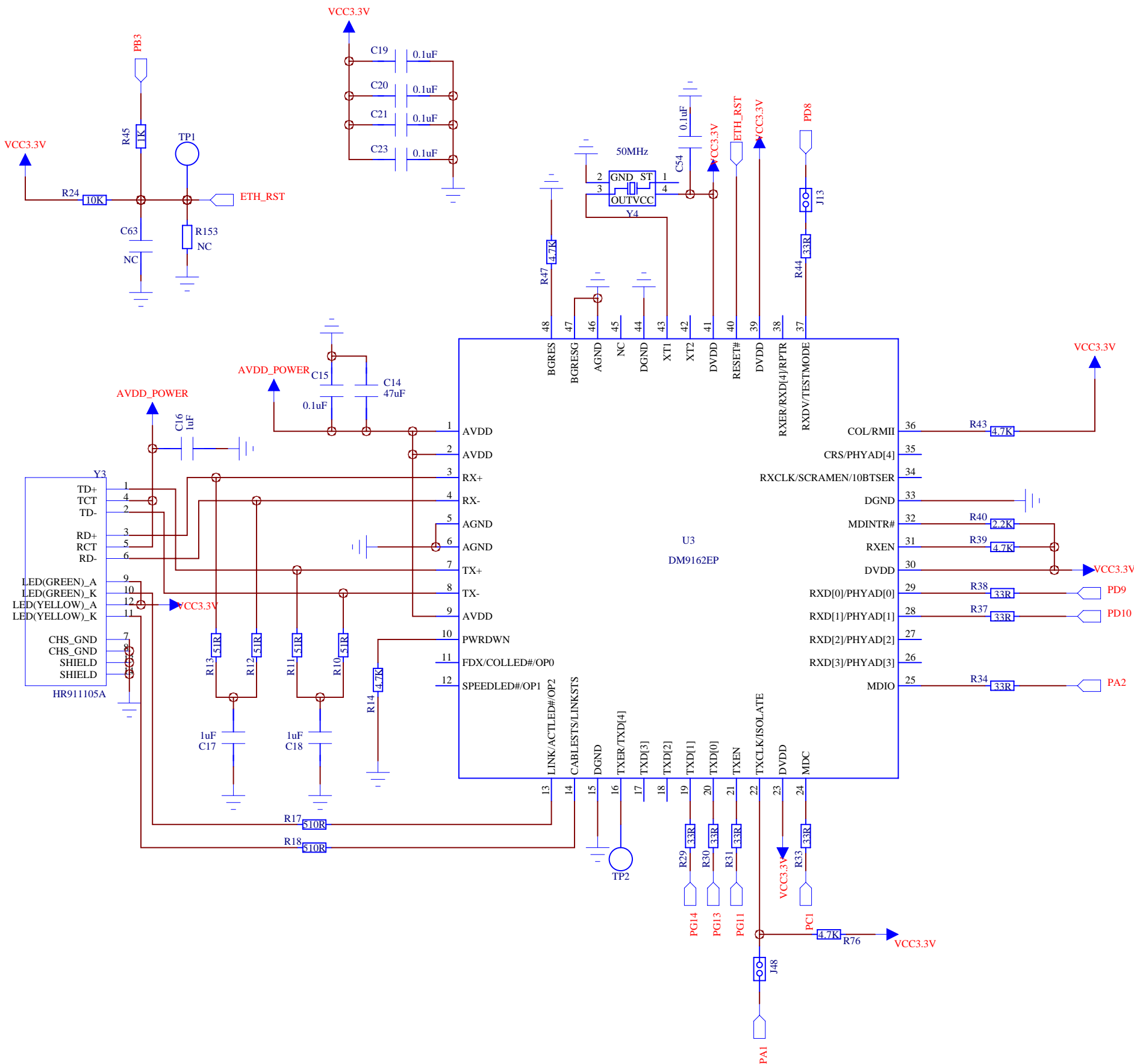
BLE



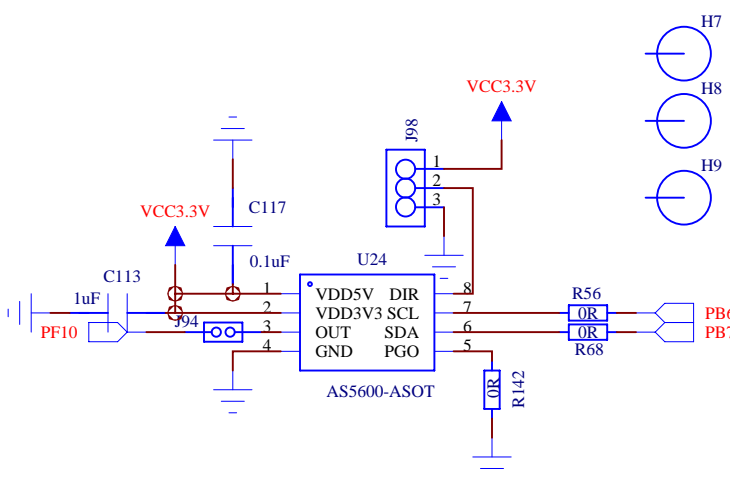
A

A

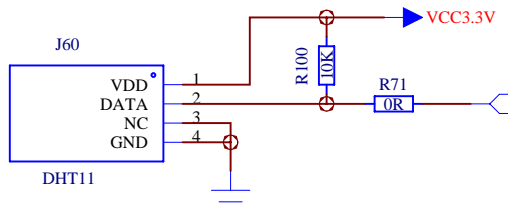
ETH



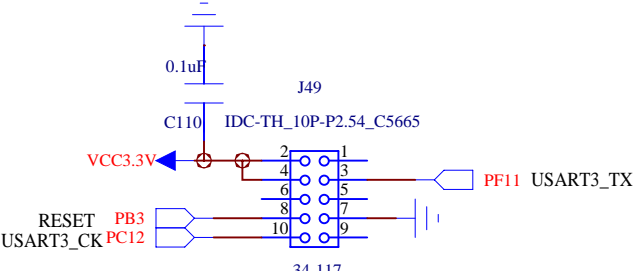
Potentiometer



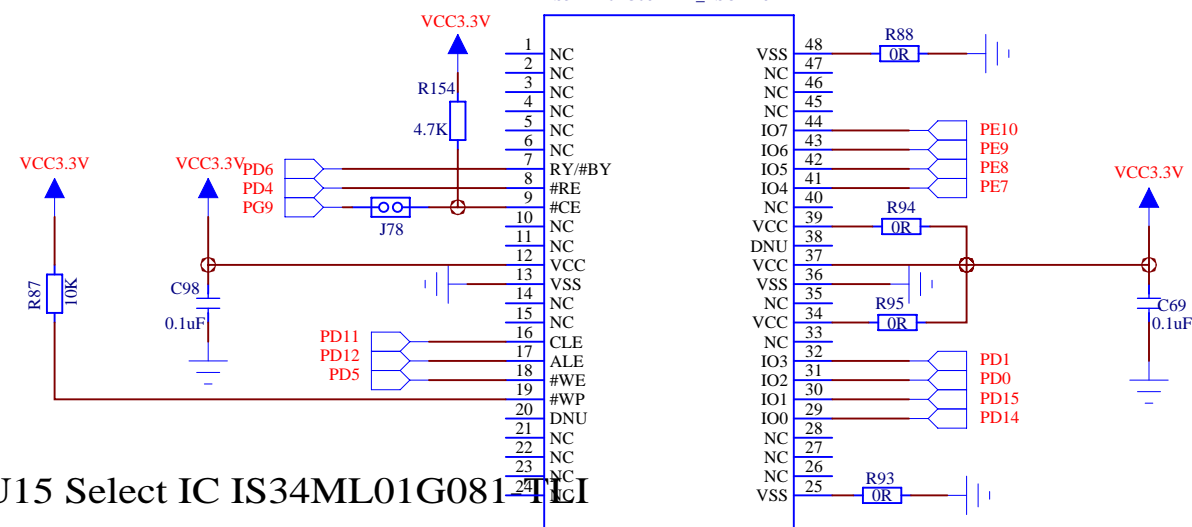
DHT11



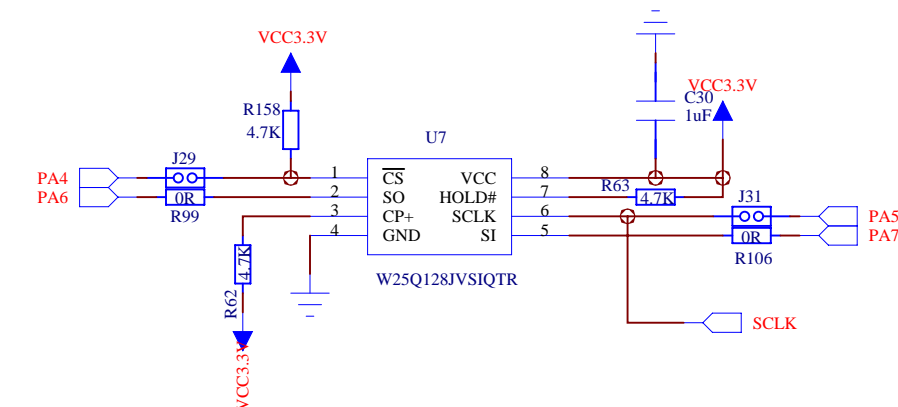
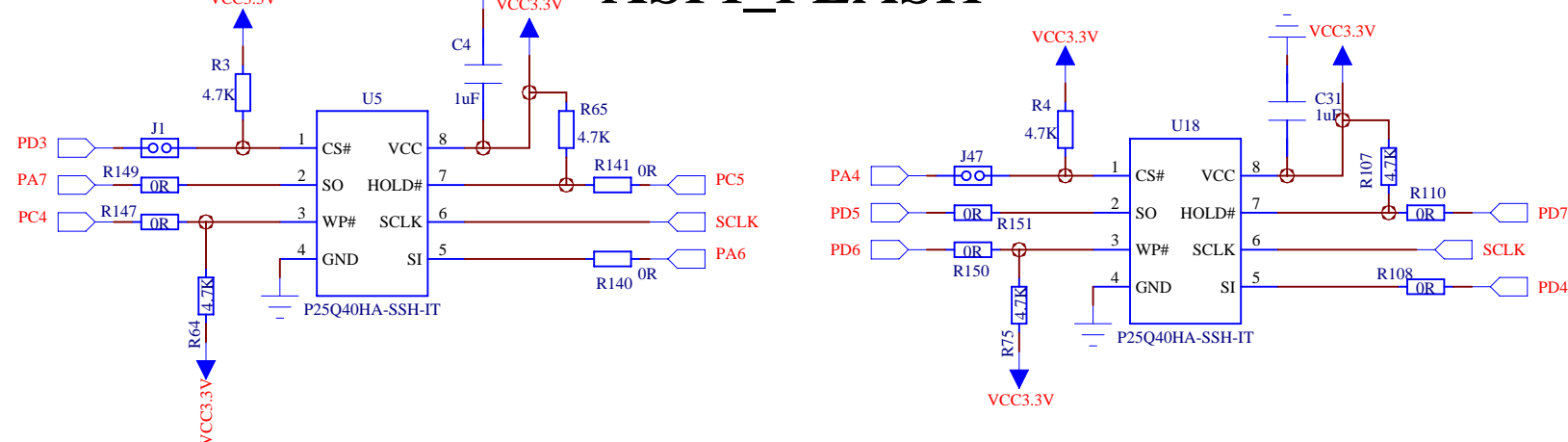
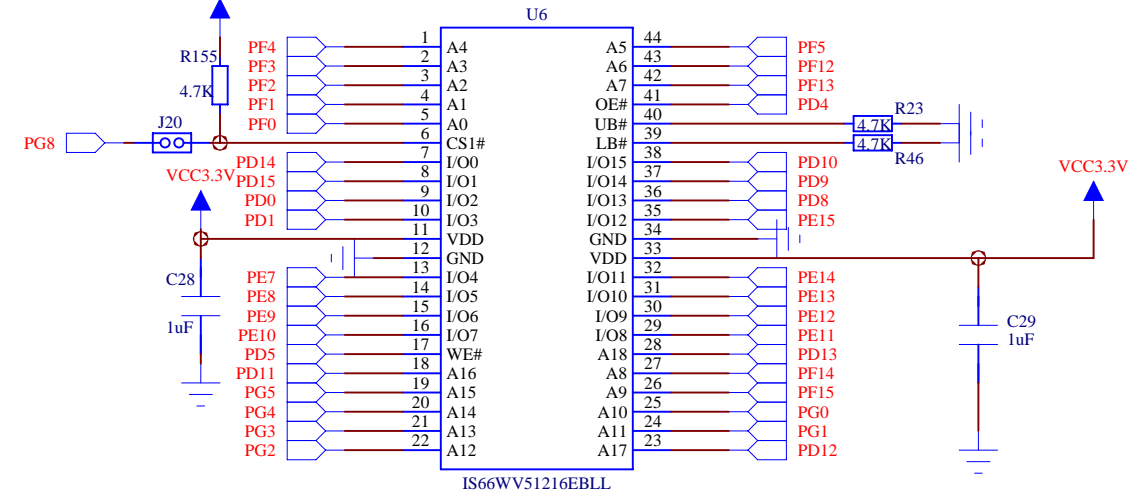
ISO-7816



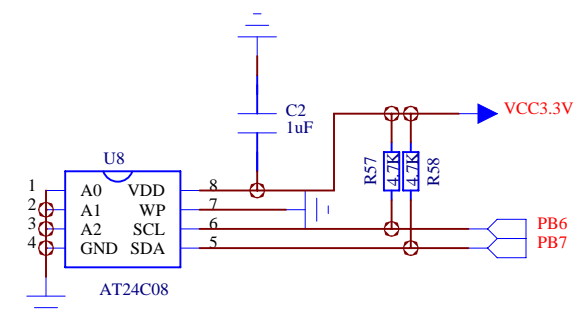
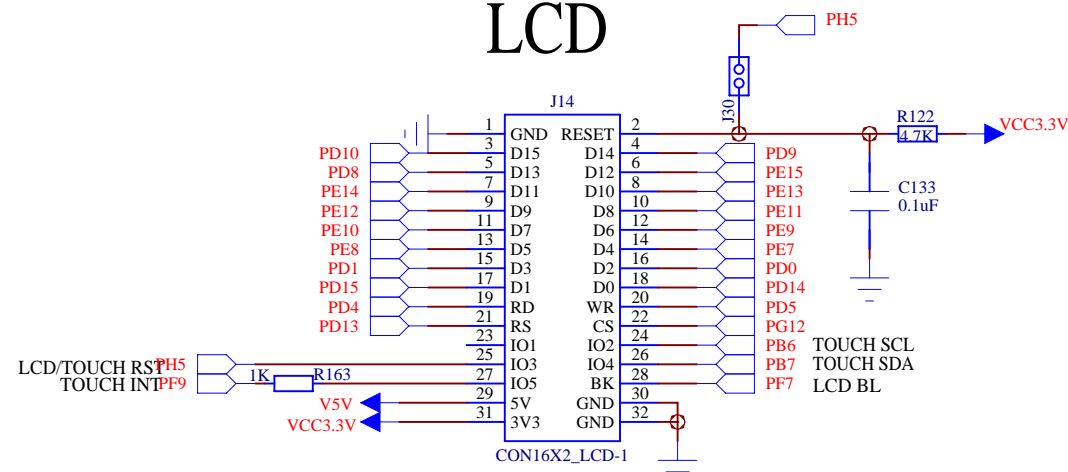
U15
IS34ML01G081-TLI TSOP-48



2. U15 Select IC MT29F1G08ABAEAWP-IT
1G X8bits



114



6

5

4

3

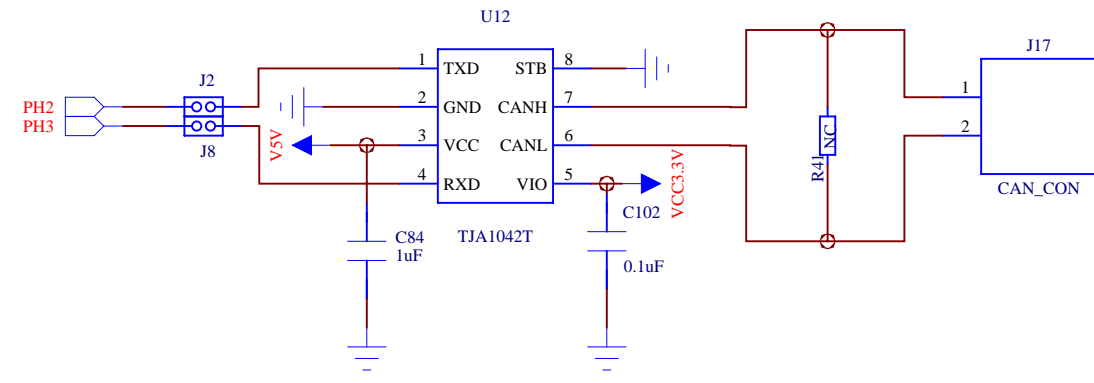
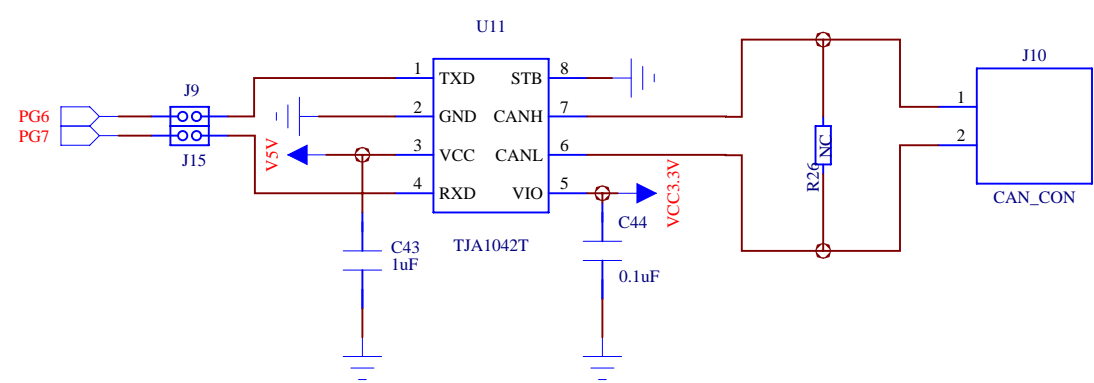
2

1

D

D

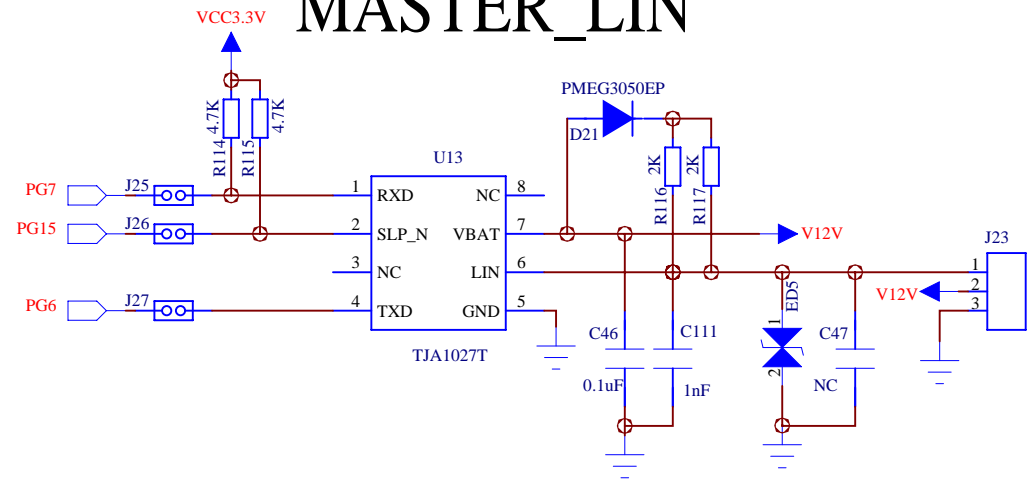
CAN



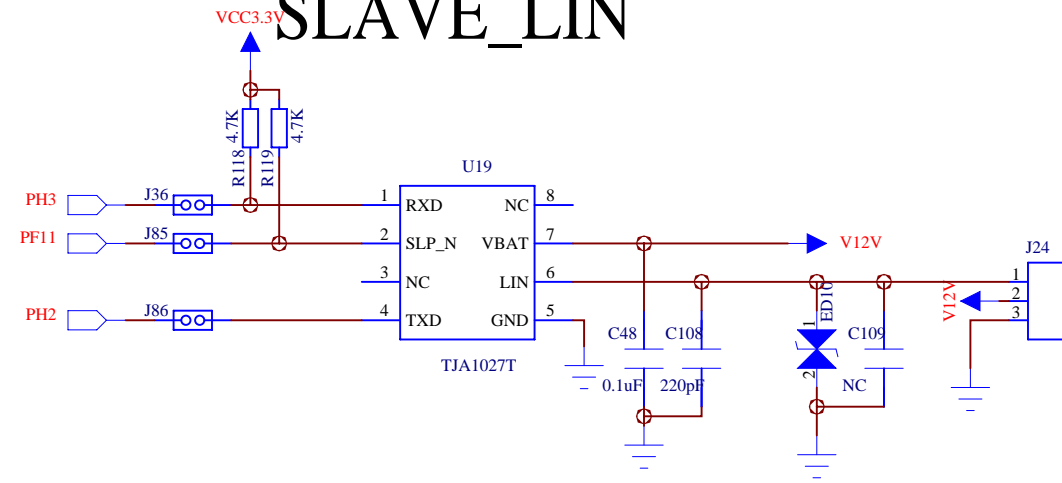
C

C

MASTER LIN



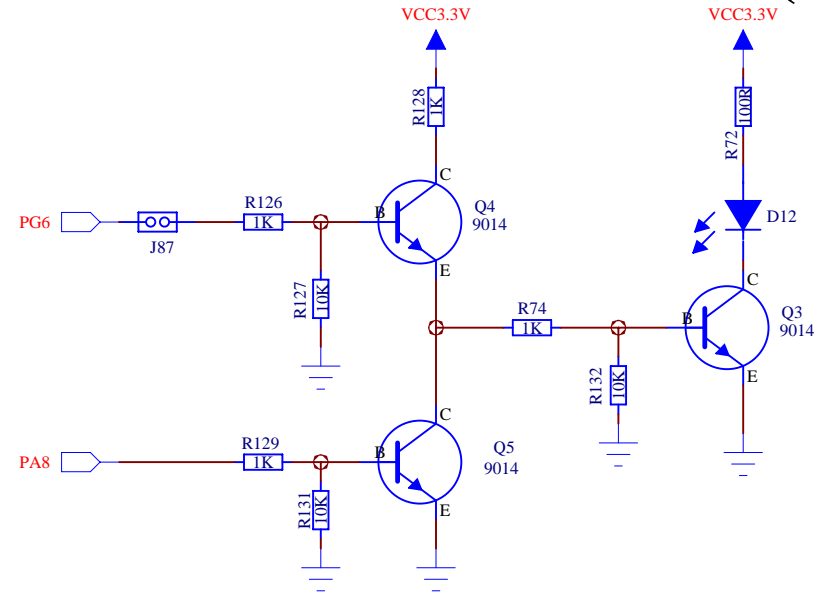
SLAVE LIN



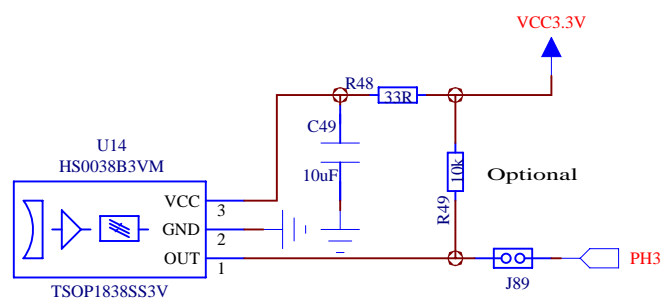
B

B

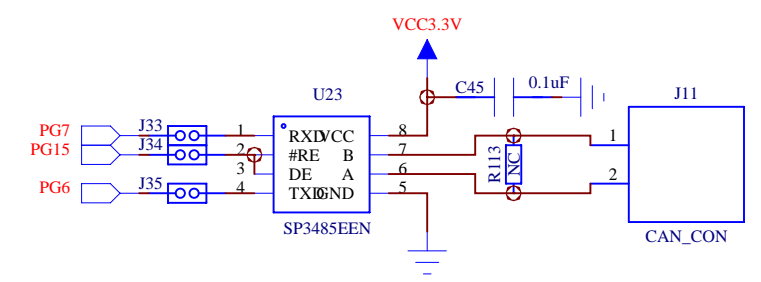
Infrared Transmitter(940nm)



IRDA Receiver




RS485



A

A



TITLE: N32H487ZEL7_EVB	
SIZE: A3	REV: V1.2
DATED: 2025-04-10	SHEET: 8OF

6

5

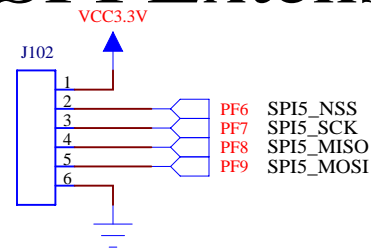
4

3

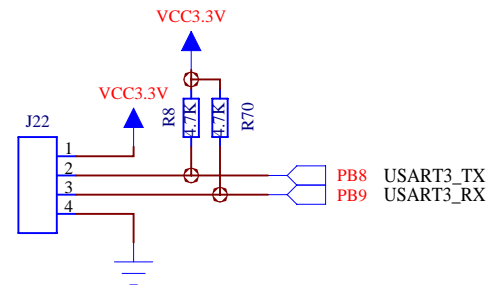
2

1

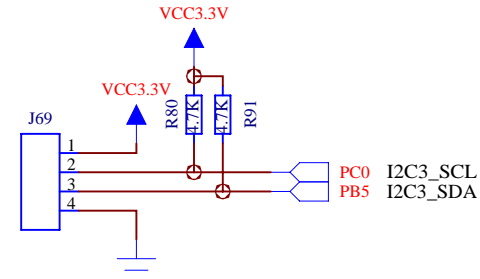
SPI Extension



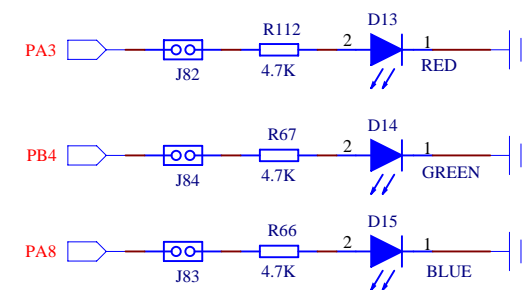
UART Extension



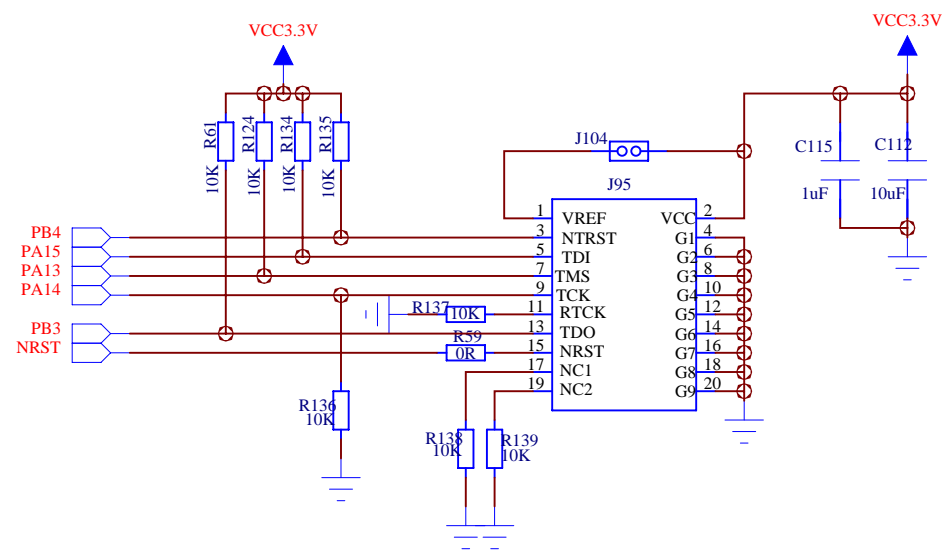
I2C Extension



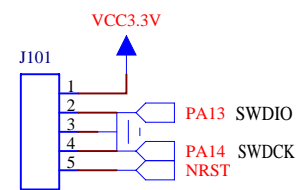
LED



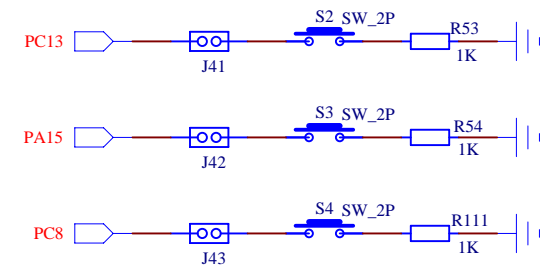
JTAG



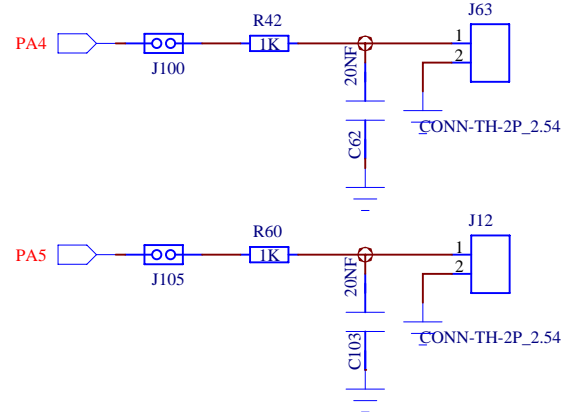
SWD



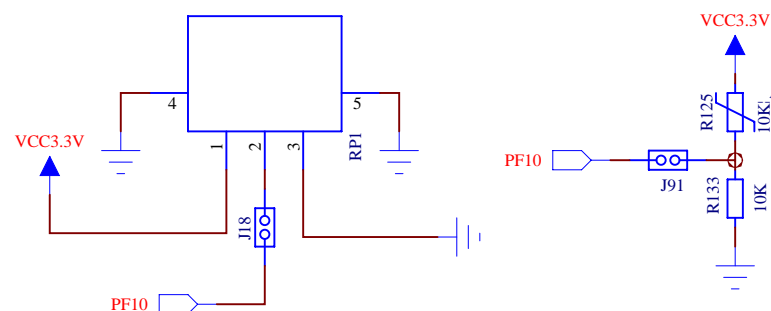
KEY



DAC



ADC



BUZZER

