

User Guide

N32G030C8L7-STB Development Board Hardware User Guide

Introduction

The purpose of this document is to allow users to quickly familiarize themselves with the N32G030C8L7-STB development board, understand the functions, instructions and precautions of the development board, so as to conduct MCU debugging and development based on the development board.

CONTENS

1	HARDWARE DEVELOPMENT INSTRUCTIONS.....	2
1.1	<i>Briefly</i>	2
1.2	<i>Development board function.....</i>	2
1.3	<i>Development board layout.....</i>	2
1.4	<i>Development Board Jumper Instructions</i>	4
1.5	<i>Development board schematic.....</i>	5
2	VERSION HISTORY	10
3	NOTICE.....	11

1 Hardware Development Instructions

1.1 Briefly

The N32G030C8L7-STB development board is used for sample development of 32-bit N32G030C8L7series chips of Nations Technology Co., Ltd. This document describes the functions, usage instructions and precautions of the N32G030C8L7-STB development board in detail.

1.2 Development board function

The main MCU chip of the development board is N32G030C8L7, and it is packaged with LQFP48 pins. The development board connects all functional interfaces to facilitate customer development.

1.3 Development board layout

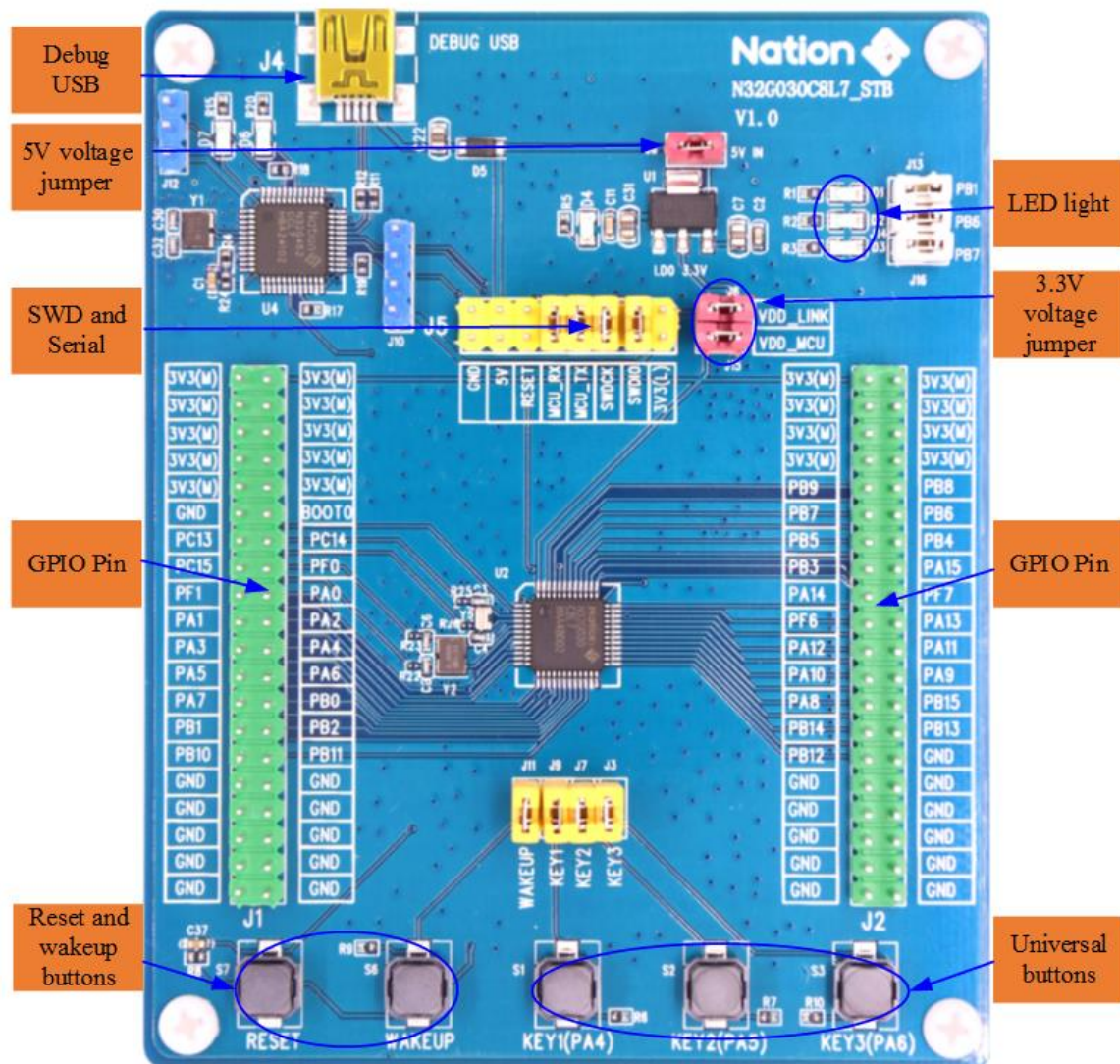


Figure 1-1 Development board layout

1) Power supply for the development board

The development board can be powered by DEBUG USB (J4), and connected to 3.3V LDO input port through J6 jumper.

2) Debug USB (J4)

MCU can be connected to the on-board NSLINK via debug USB or used as a serial port (NSLINK

as Serial to USB tool)

3) SWD interface and Serial port (J5)

SWD interface: SWDIO and SWDCK, used to download and debug the main MCU program, you can use ULINK2 or JLINK to download and debug the MCU, or you can short the SWDIO signal pin and the SWDCK signal pin with the jumper cap, and download the MCU through DEBUG USB debugging.

Serial port: MCU_TX and MCU_RX, used as serial port external signal, MCU's PA9 (TX) and PA10 (RX) are used as serial port, which can be connected to serial port devices separately, or the jumper cap can short the MCU_TX signal pin and the MCU_RX signal pin, Through the NS-LINK on the development board, the USB port is converted into a serial port, which is convenient for customers to use.

4) Reset and Wake Buttons (S7, S6)

S7 and S6 are the reset button and wake-up button respectively, Connect the chip's NRST pin and PA0-WKUP pin respectively for chip reset and wake-up functions.

5) Universal keys (S1, S2, S3)

S1, S2, and S3 are general buttons, which are connected to the pins PA4, PA5 and PA6 of the chip respectively.

6) BOOT (J1 PIN12)

J1 PIN12 is BOOT0 pin, which can be shorted to power and ground through jumper caps as needed.

7) GPIO (J1, J2)

The GPIO interface of the chip is all led out, and the 3.3V voltage and GND pins are also reserved on the pins, which is convenient for testing. For the specific definition of the interface, please refer to "DS_N32G030 Series Datasheet".

1.4 Development Board Jumper Instructions

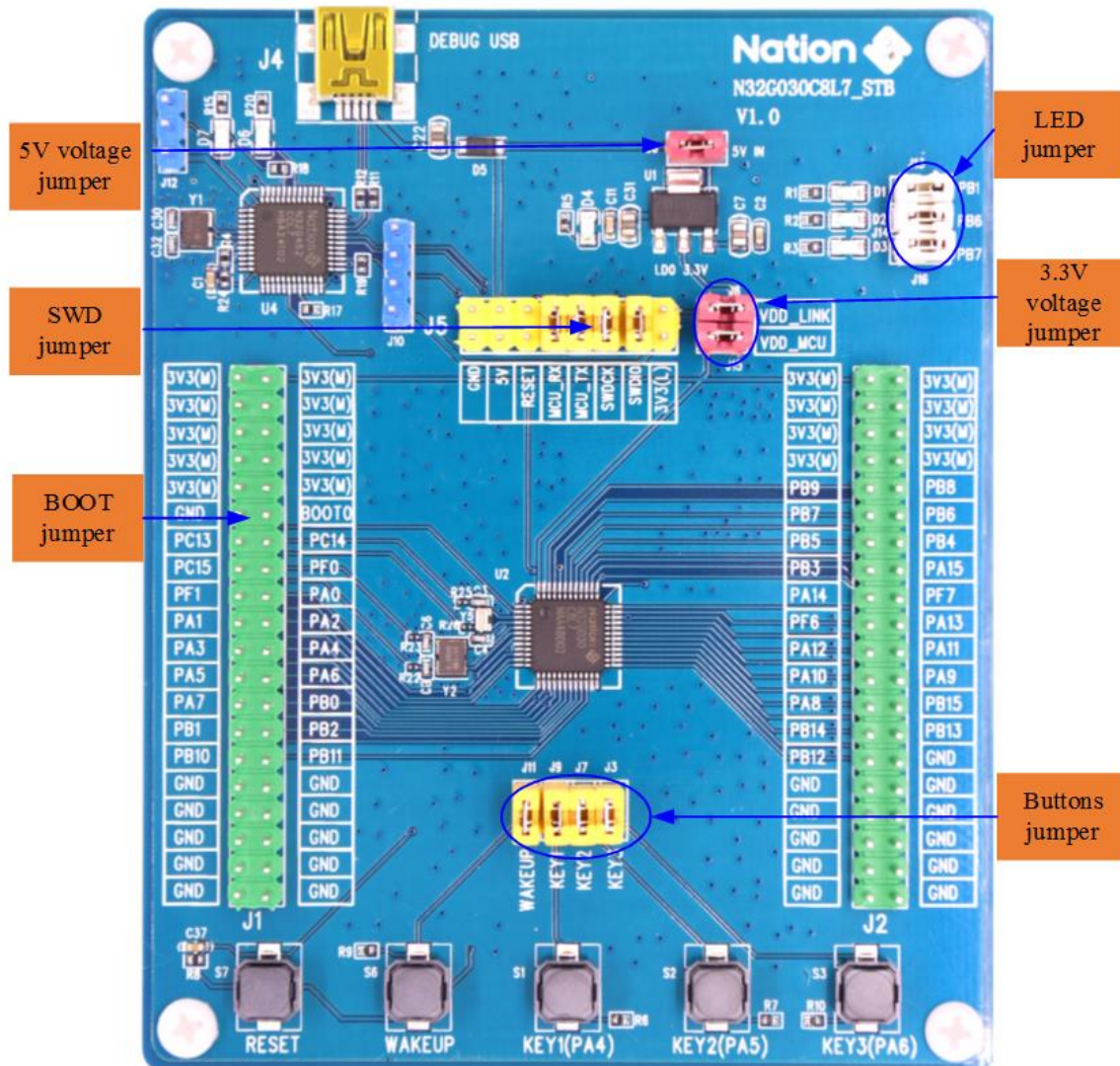


Figure 1-2 Development Board Jumper Description

Table 1-1 Development Board Jumper Description List

No.	Jumper bit number	Jumper function	Instructions for use
1	J6	5V input voltage jumper	The jumper J6 is used to connect the USB ports J4 to supply power to the LDO3.3V input port.
2	J8、J15	3.3V Power supply jumper	J8: Power supply 3.3V to NS-LINK MCU chip. J15: Power supply 3.3V to the main MCU chip.
3	J5	SWD jumper	Use NS-LINK to download the program to the MCU through the USB DEBUG port, you need to short-circuit the SWDIO signal pin and the SWDCK signal pin.
	J5	Serial jumper	When using NS-LINK as a serial port through the USB DEBUG port, you need to short-circuit the MCU_TX signal pin and the MCU_RX signal pin.
4	J1 PIN12	BOOT jumper	J1 PIN12: BOOT0.
5	J13、J14、J16	LED light jumper	LED light jumper to disconnect GPIO from LED J13: D1(PB1) J14: D2(PB6) J16: D3(PB7)
6	J3、J7、J9、J11	button jumper	Button jumper to disconnect the GPIO from the button J9: KEY1(PA4) J7: KEY2 (PA5) J3: KEY3(PA6) J11: WAKEUP(PA0)

1.5 Development board schematic

The schematic diagram of the N32G030C8L7-STB development board is described as follows (For details, please refer to "N32G030C8L7-STB_V1.0").

1) MCU connection

Refer to Figure 1-3 for the schematic diagram of the MCU connection. Each VDD pin of the MCU is

connected with a capacitor, and all GPIOs are connected to the J1 and J2 pins for easy debugging.

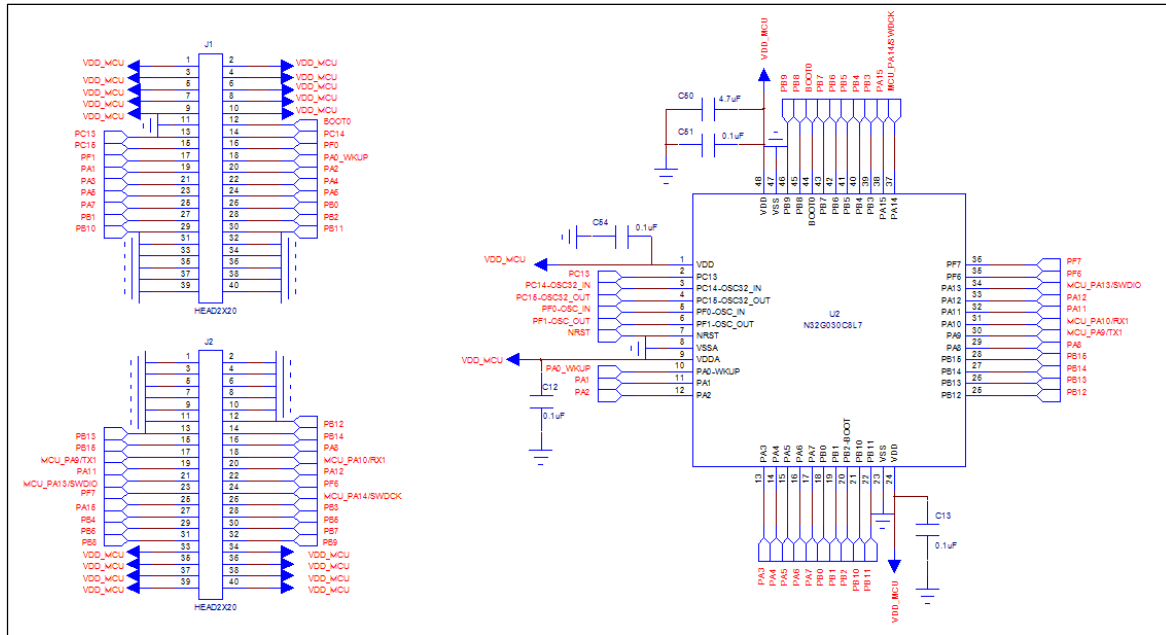


Figure 1-3 MCU connection diagram

2) Power Design

Refer to Figure 1-4 for the schematic diagram of the power supply design. The PCB is powered by 5V through USB, and then outputs 3.3V through the LDO to supply power to the entire PCB board.

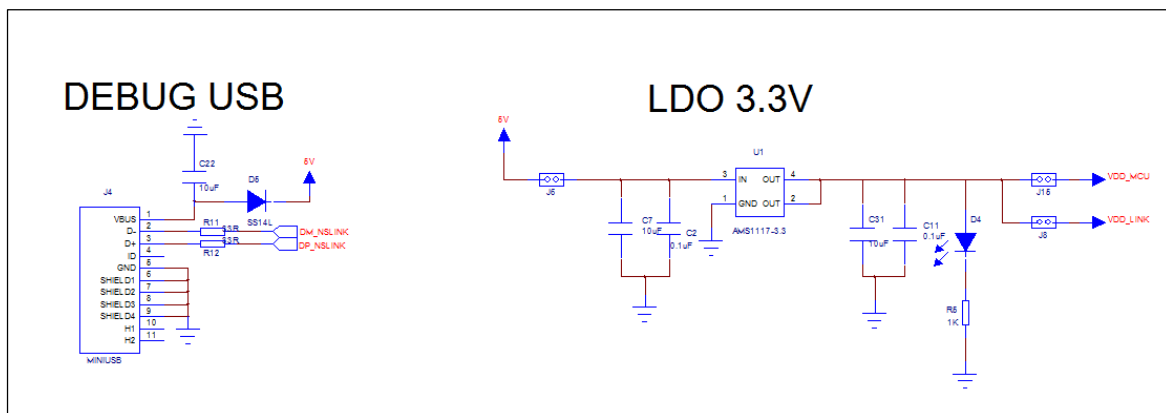


Figure 1-4 Power Design

3) button design

Refer to Figure 1-5 for the schematic diagram of the key design. There are a total of 5 keys, which are the three general keys, the MCU wake-up key and reset key.

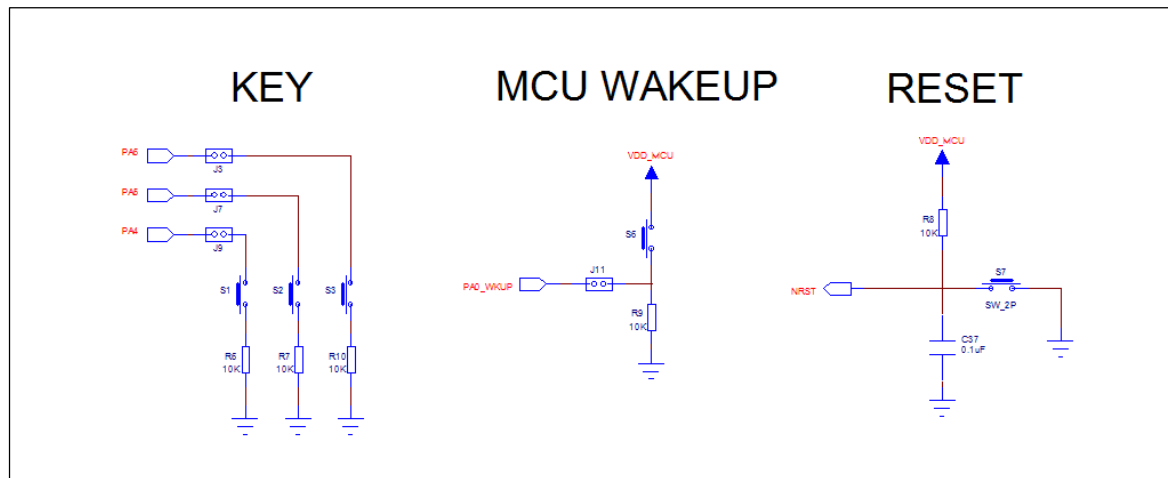


Figure 1-5 Button Design

4) LED light design

Refer to Figure 1-6 for the schematic diagram of LED light design. There are a total of 5 LED lights. D1, D2, and D3 are connected to PB1, PB6 and PB7 of the main MCU respectively, which can be used for debugging. D6 and D7 are used for NS-LINK MCU control to monitor the running status of NS-LINK.

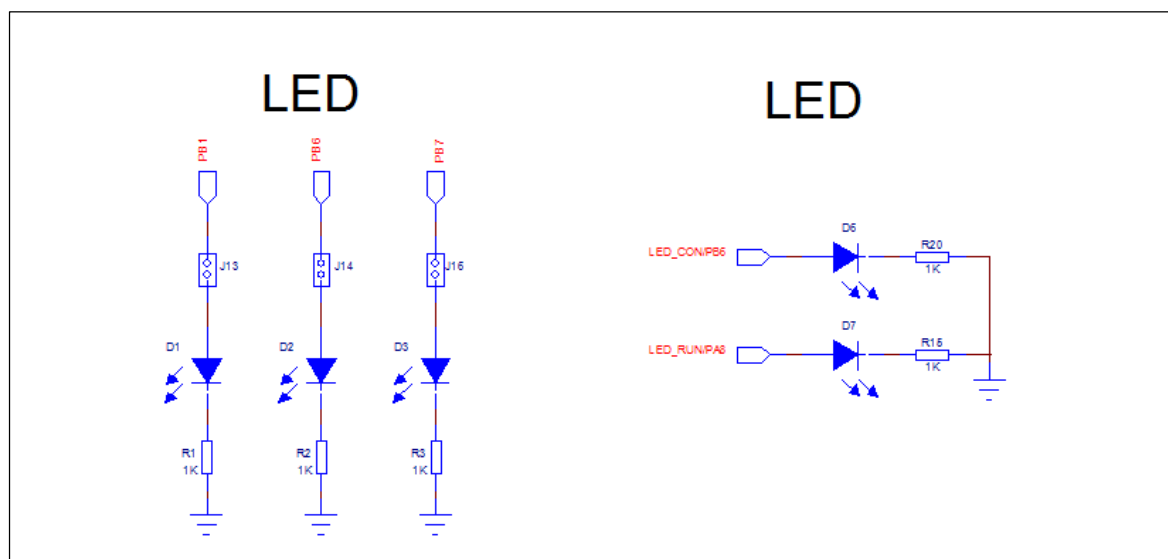


Figure 1-6 LED Light Design

5) crystal

Refer to Figure 1-7 for the crystal connection diagram. The chip has two external crystals, 8MHz and 32.768KHz respectively.

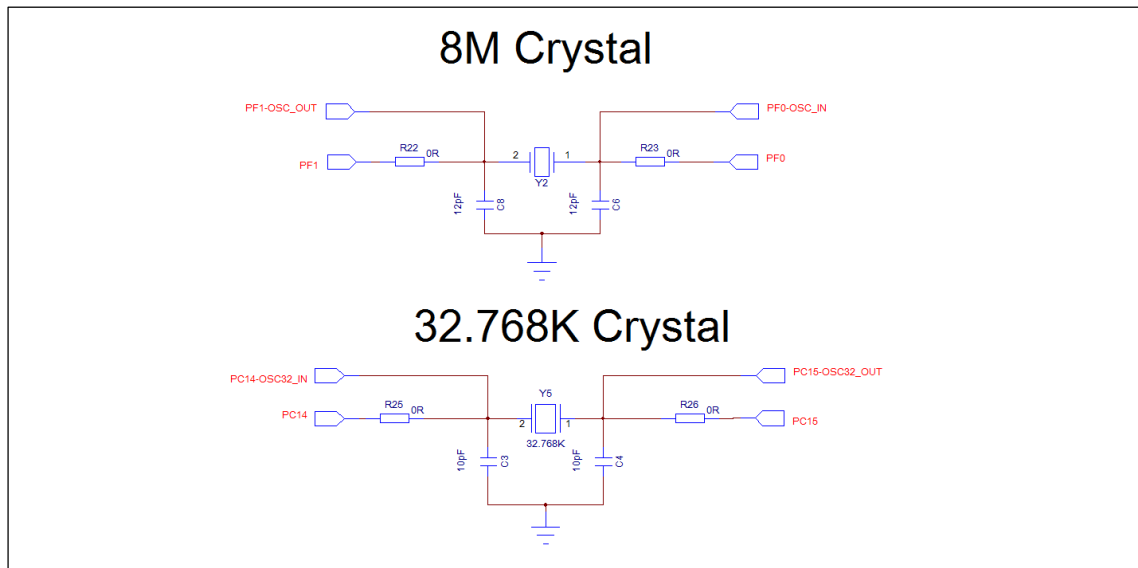


Figure 1-7 crystal design

6) NS-LINK

Refer to Figure 1-8 for the schematic diagram of NS-LINK. Users can directly connect the USB cable to download the program through the DEBUG USB port, omitting the ULINK or JLINK writer. You can also debug through the DEBUG USB analog serial port.

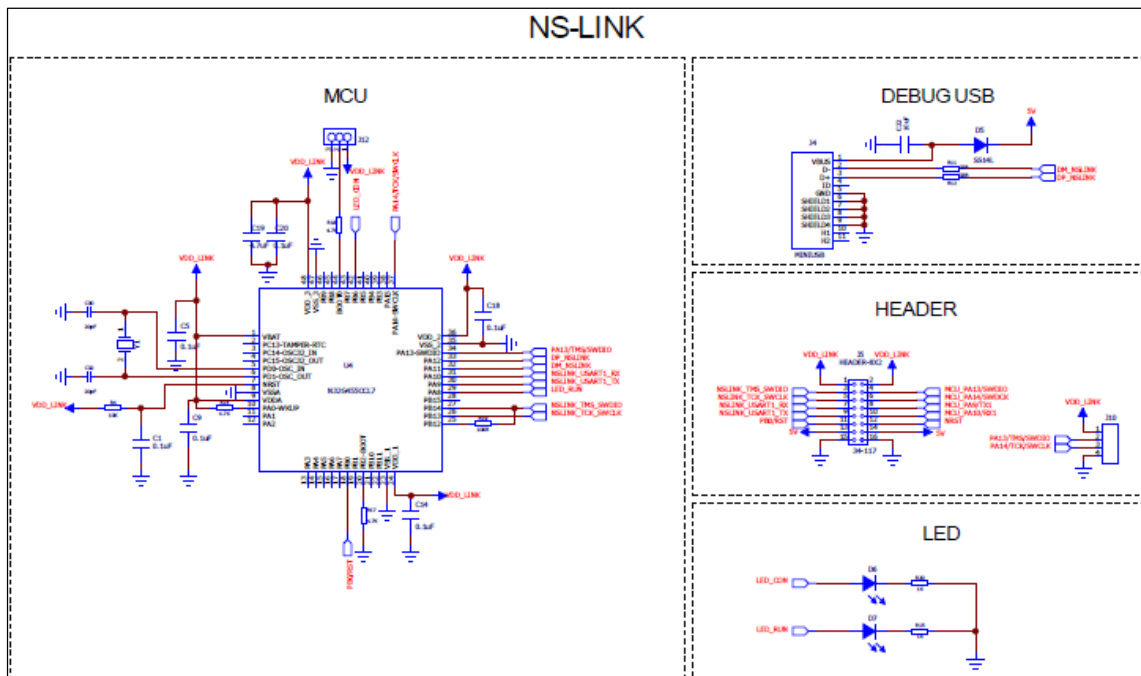


Figure 1-8 NS-LINK

- **Description of peripheral devices:**

- 1) When designing PCB LAYOUT, put two capacitors near VDD (PIN48), 4.7uF and 0.1uF respectively, and put 0.1uF capacitors near the other VDD pins
- 2) PC14-OSC32_IN, PC15-OSC32_OUT: When there is a need for an external high-precision RTC clock, a 32.768KHz crystal needs to be connected close to the pin, and it can be omitted if there is no need.

2 Version history

Version	Date	Modify
V1.0	2020-07-25	1. Initial version

3 Notice

This document is the exclusive property of NSING TECHNOLOGIES PTE. LTD. (Hereinafter referred to as NSING). This document, and the product of NSING described herein (Hereinafter referred to as the Product) are owned by NSING under the laws and treaties of Republic of Singapore and other applicable jurisdictions worldwide. The intellectual properties of the product belong to NSING Technologies Inc. and NSING Technologies Inc. does not grant any third party any license under its patents, copyrights, trademarks, or other intellectual property rights. Names and brands of third party may be mentioned or referred thereto (if any) for identification purposes only. NSING reserves the right to make changes, corrections, enhancements, modifications, and improvements to this document at any time without notice. Please contact NSING and obtain the latest version of this document before placing orders. Although NSING has attempted to provide accurate and reliable information, NSING assumes no responsibility for the accuracy and reliability of this document. It is the responsibility of the user of this document to properly design, program, and test the functionality and safety of any application made of this information and any resulting product. In no event shall NSING be liable for any direct, indirect, incidental, special, exemplary, or consequential damages arising in any way out of the use of this document or the Product. NSING Products are neither intended nor warranted for usage in systems or equipment, any malfunction or failure of which may cause loss of human life, bodily injury or severe property damage. Such applications are deemed, Insecure Usage'. Insecure usage includes, but is not limited to: equipment for surgical implementation, atomic energy control instruments, airplane or spaceship instruments, all types of safety devices, and other applications intended to supporter sustain life. All Insecure Usage shall be made at user's risk. User shall indemnify NSING and hold NSING harmless from and against all claims, costs, damages, and other liabilities, arising from or related to any customer's Insecure Usage Any express or implied warranty with regard to this document or the Product, including, but not limited to. The warranties of merchantability, fitness for a particular purpose and non-infringement are disclaimed to the fullest extent permitted by law. Unless otherwise explicitly permitted by NSING, anyone may not use, duplicate, modify, transcribe or otherwise distribute this document for any purposes, in whole or in part.