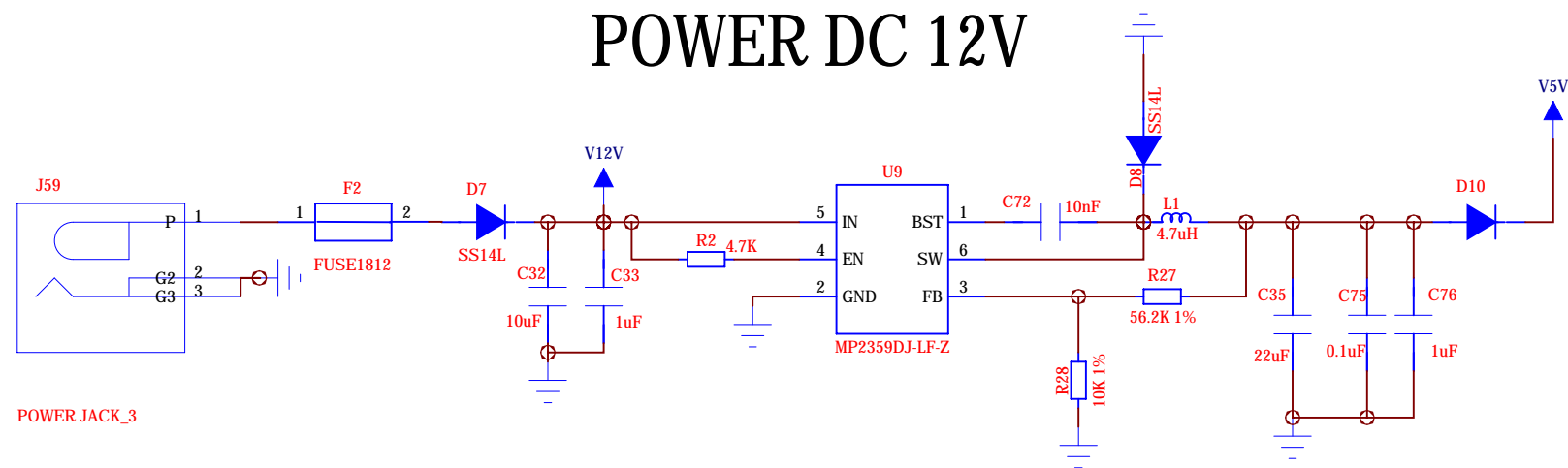


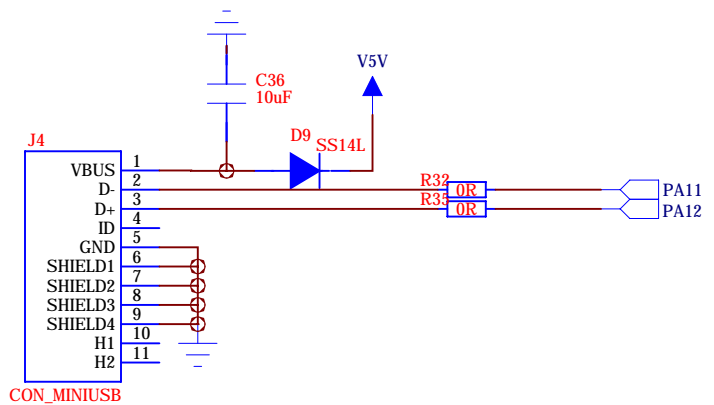
D

D

POWER DC 12V



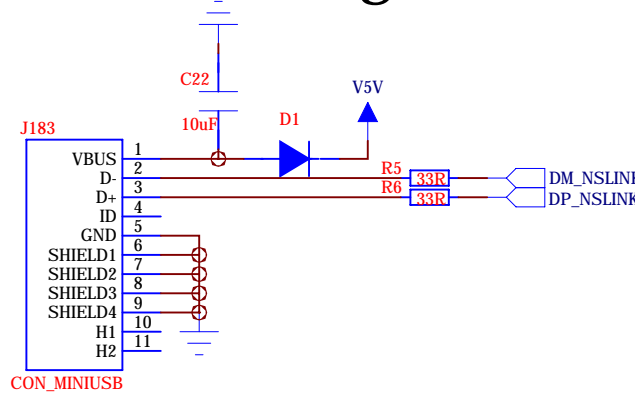
USB Device



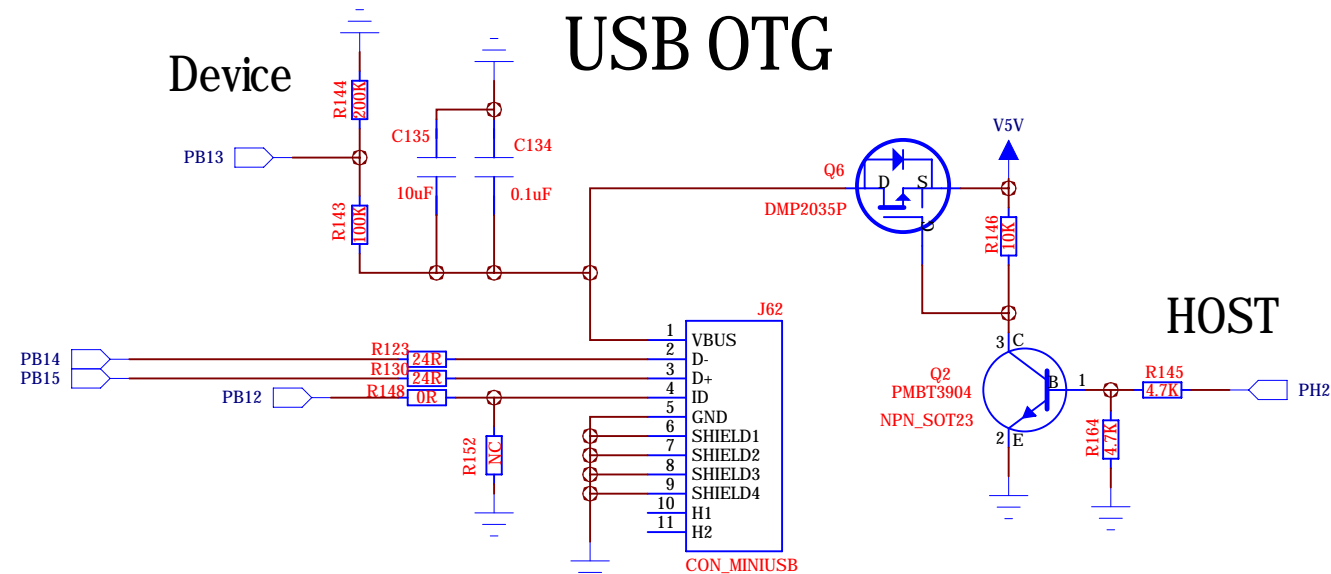
C

C

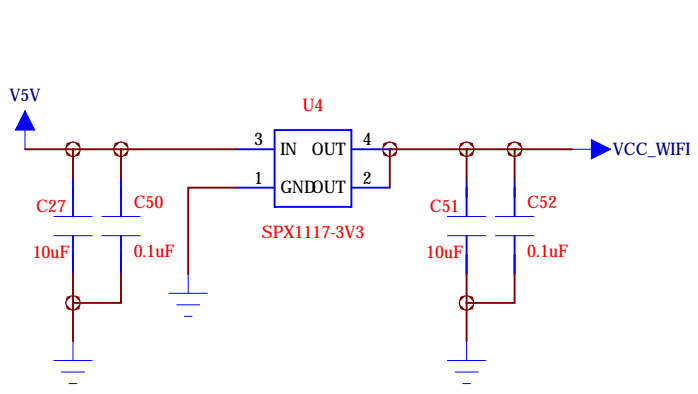
USB Debug



USB OTG



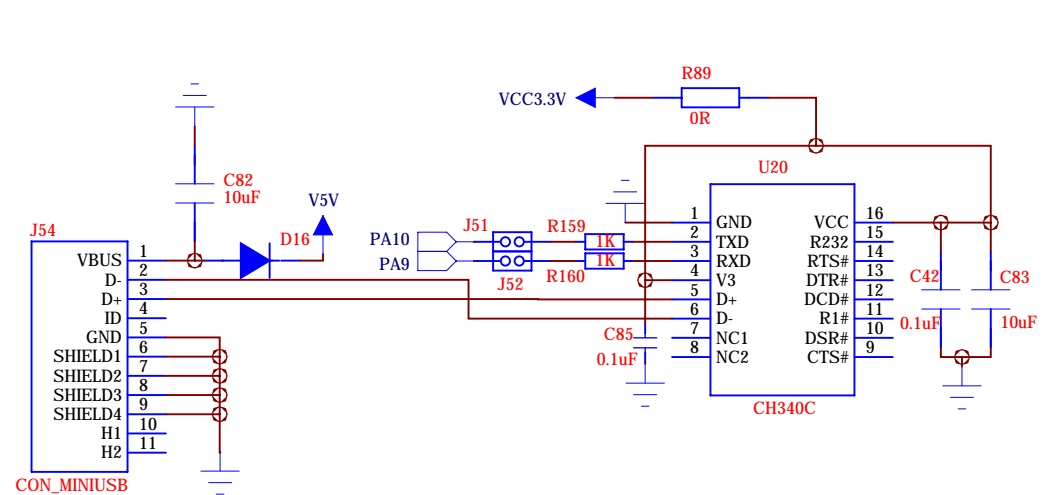
VCC_WIFI/BLE



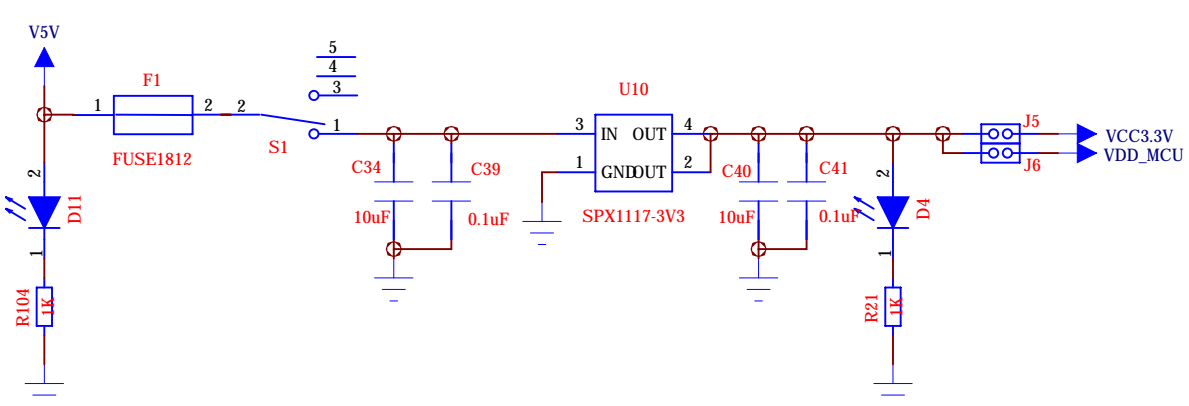
B

B

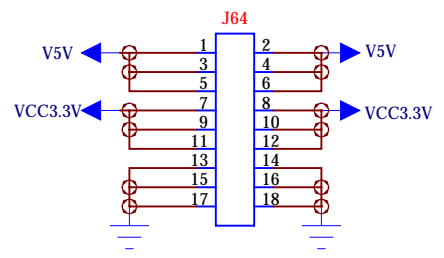
USB TO UART



5V TO 3.3V



POWER PIN



A

A

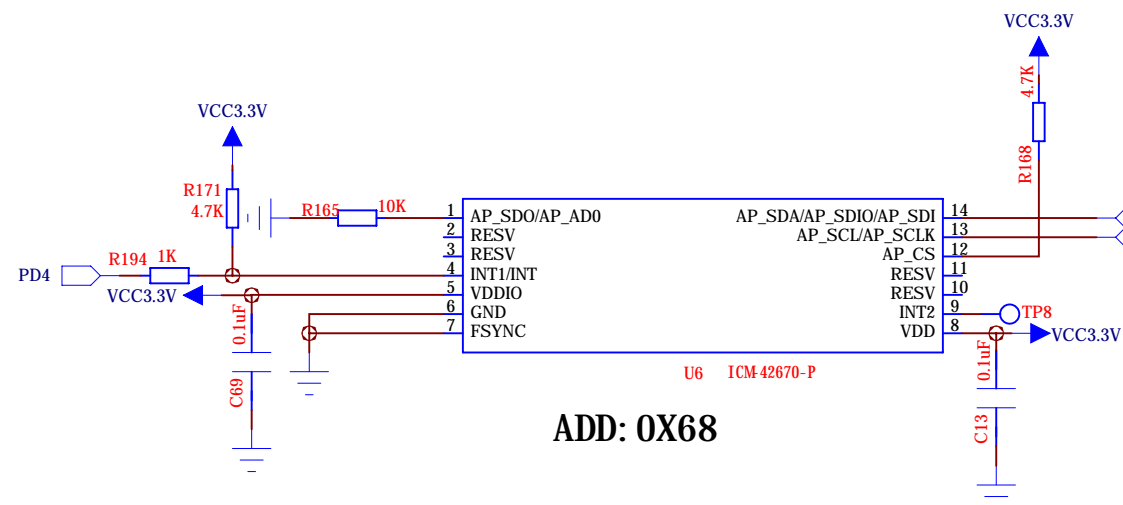


TITLE: N32H497ZGL7_EVB

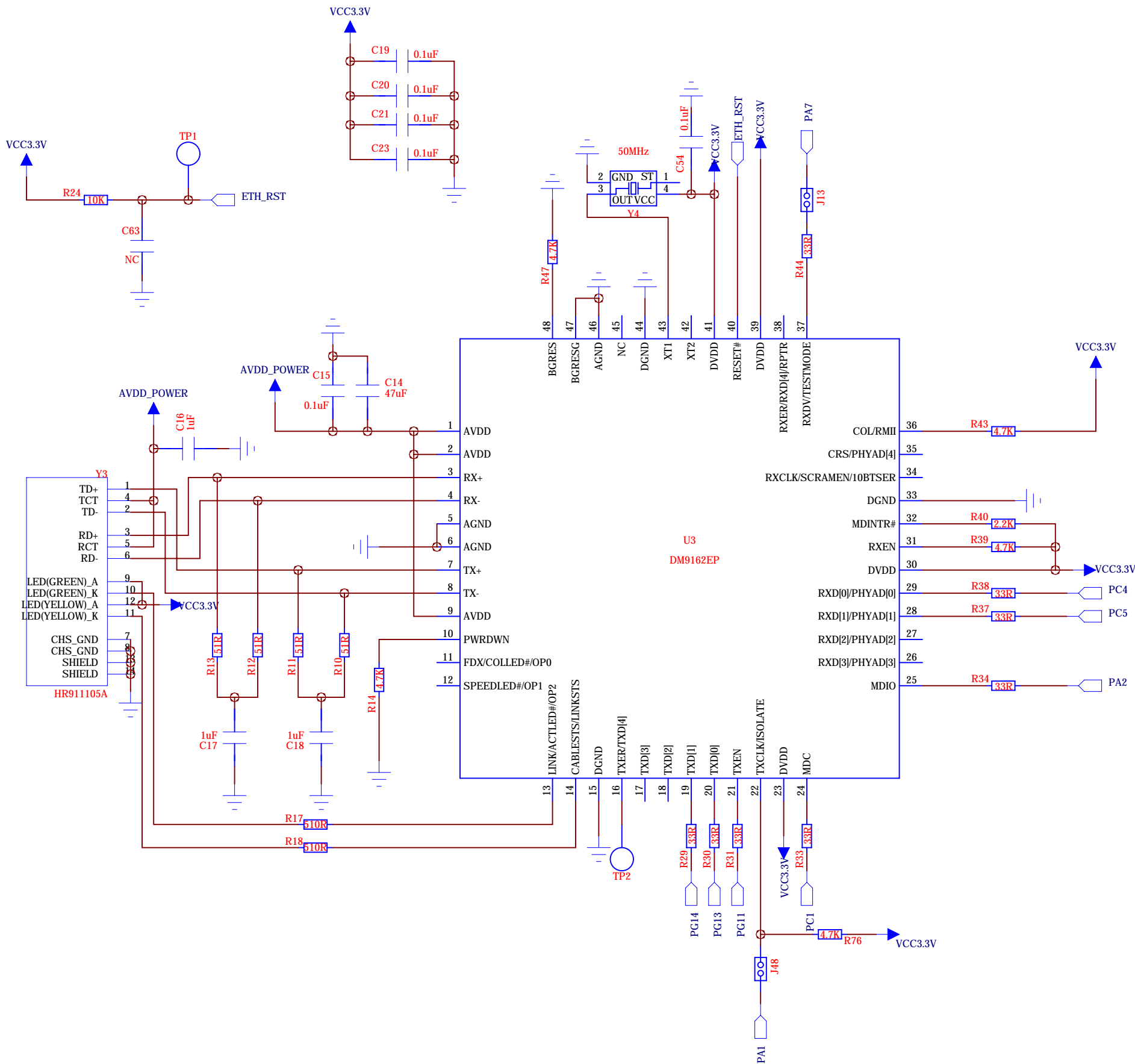
SIZE: A3 REV: V1.0

DATED: 2025-11-28 SHEET: 1 OF 8

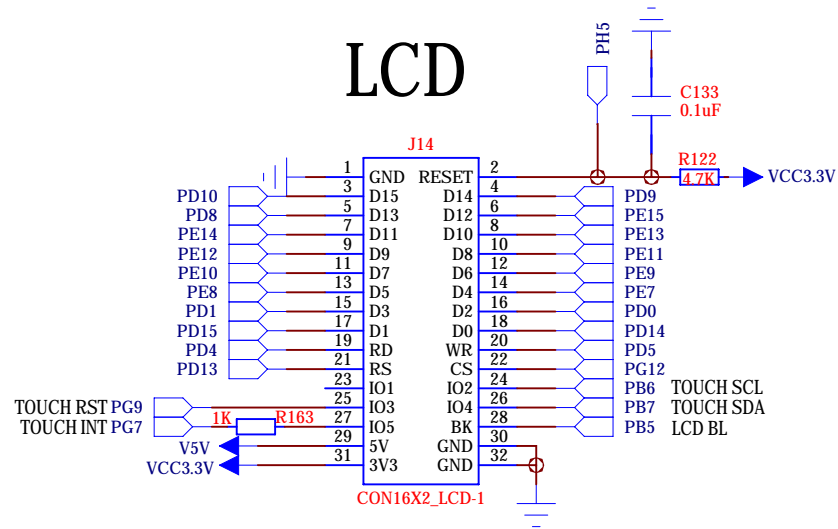
Six-axis sensor



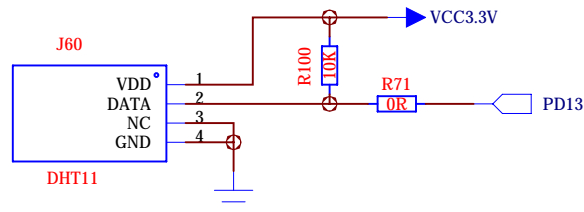
ETH



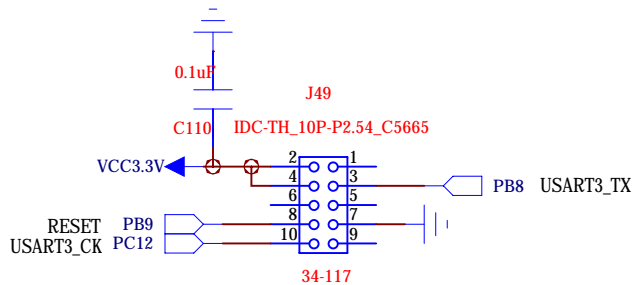
LCD



DHT11



ISO-7816



TITLE: N32H497ZGL7_EVB

SIZE: A3 REV: V1.0

DATED: 2025-11-28 SHEET: 5 OF 8

DSMU

C3029749 NSI 1306M25-DSWR

XSPI_FLASH

XSPI_PSRAM

SDRAM

SPI_FLASH

EEROM



TITLE: N32H497ZGL7_EVB

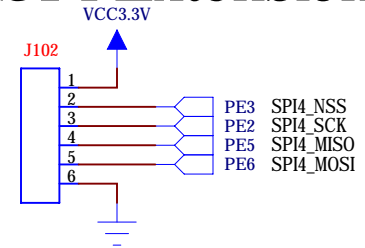
SIZE: A3

REV: V1.0

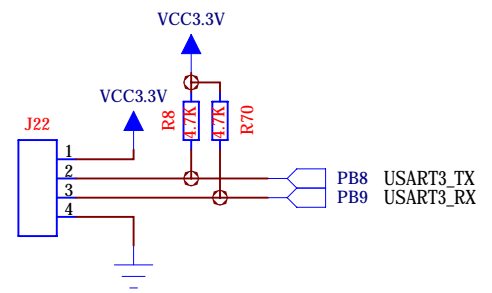
DATED: 2025-11-28

SHEET: 6 OF 8

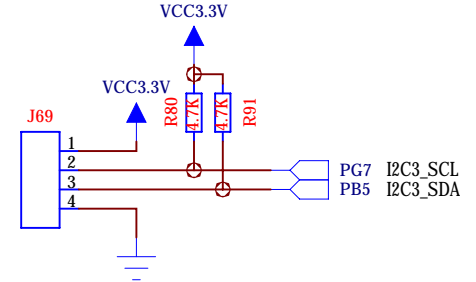
SPI Extension



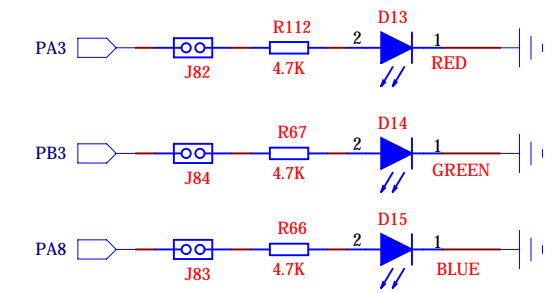
UART Extension



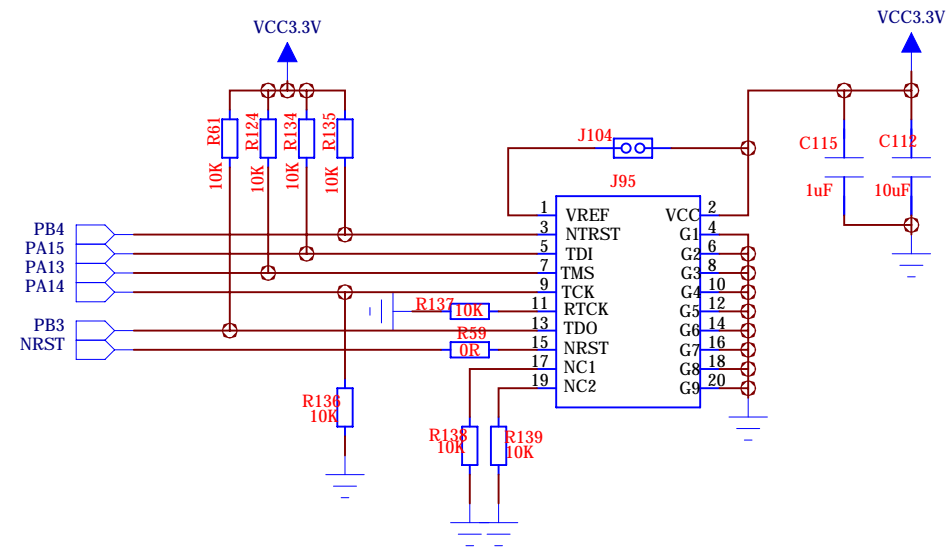
I2C Extension



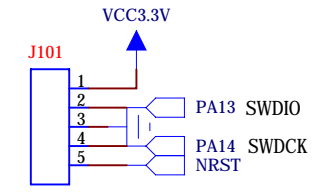
LED



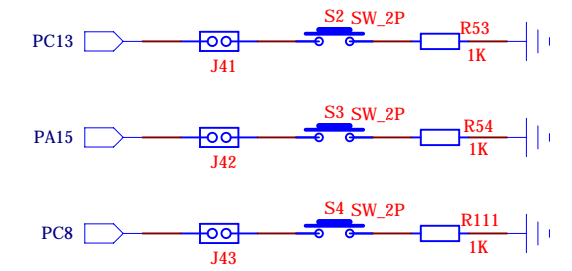
JTAG



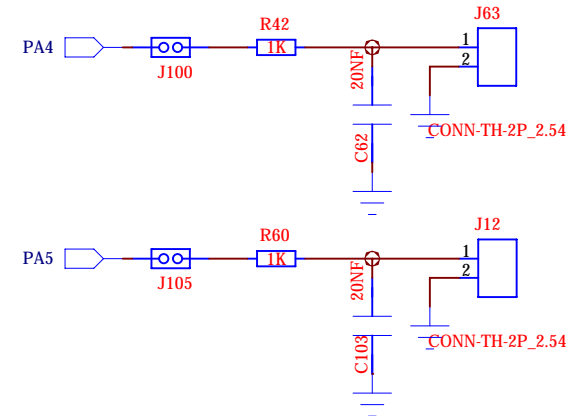
SWD



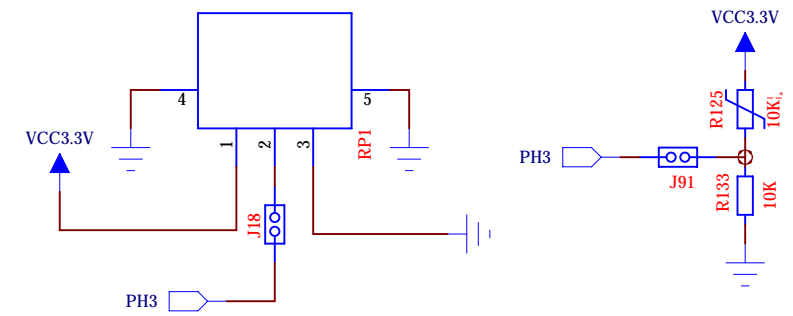
KEY



DAC



ADC



BUZZER

